

We encourage everyone to view the meeting live via YouTube.

Leavenworth County
Board of County Commissioners

Regular Meeting Agenda
300 Walnut Street, Suite 225
Leavenworth, KS 66048
January 4, 2023
9:00 a.m.

- I. CALL TO ORDER
- II. PLEDGE OF ALLEGIANCE/MOMENT OF SILENCE
- III. ROLL CALL
- IV. PUBLIC COMMENT: Public Comment shall be limited to 15 minutes at the beginning of each meeting for agenda items **only** and limited to three minutes per person. Comments at the end of the meeting shall be open to any topic of general interest to the Board of County Commissioners and limited to five minutes per person. There should be no expectation of interaction by the Commission during this time.

Anyone wishing to make comments either on items on the agenda or not are encouraged to provide their comments in writing no later than 8:00 AM the Monday immediately preceding the meeting. These comments will be included in the agenda packet for everyone to access and review. This allows the Commission to have time to fully consider input and request follow up if needed prior to the meeting.
- V. ADMINISTRATIVE BUSINESS:
- VI. CONSENT AGENDA: The items on the Consent Agenda are considered by staff to be routine business items. Approval of the items may be made by a single motion, seconded, and a majority vote with no separate discussion of any item listed. Should a member of the Governing Body desire to discuss any item, it will be removed from the Consent Agenda and considered separately.
 - a) Approval of the minutes of December 28, 2022
 - b) Approval of the schedule for the week January 9, 2023

- c) Approval of the check register
- d) Approve and sign the OCB's

VII. FORMAL BOARD ACTION:

- a) Consider a motion to approve Resolution 2023-1, a rezone request from RR-5 to RR-2.5 located at 19266 Leavenworth Rd.
- b) Consider a motion to approve Resolution 2023-2, a rezone request from RR-5 to RR-2.5 located at 20682 & 00000 195th St.

VIII. PRESENTATIONS AND DISCUSSION ITEMS: presentations are materials of general concern where no action or vote is requested or anticipated.

- a) Sherman and Reno Townships fire district consolidation request
- b) Executive session to discuss non-elected personnel

IX. ADDITIONAL PUBLIC COMMENT IF NEEDED

X. ADJOURNMENT

**WORK SESSION TO DISCUSS SUBDIVISION ROADWAY
INSPECTIONS**

LEAVENWORTH COUNTY COMMISSIONERS MEETING SCHEDULE

Monday, January 2, 2023 THE COURTHOUSE WILL BE CLOSED IN OBSERVANCE OF NEW YEAR'S DAY

Tuesday, January 3, 2023

Wednesday, January 4, 2023

9:00 a.m. Leavenworth County Commission meeting
• Commission Meeting Room, 300 Walnut, Leavenworth KS

Thursday, January 5, 2023

Friday, January 6, 2023

ALL SUCH OTHER BUSINESS THAT MAY COME BEFORE THE COMMISSION

ALL MEETINGS ARE OPEN TO THE PUBLIC

COMMENTS SHOULD BE OF GENERAL INTEREST OF THE PUBLIC AND SUBJECT TO THE RULES OF DECORUM

*****December 28, 2022*****

The Board of County Commissioners met in a regular session on Wednesday, December 28, 2022. Commissioner Mike Smith, Commissioner Doug Smith, Commissioner Kaaz, Commissioner Culbertson and Commissioner Stieben are present; Also present: Mark Loughry, County Administrator; David Van Parys, Senior County Counselor; Krystal Voth, Planning and Zoning Director; John Richmeier, Leavenworth Times

Residents: John Matthews, Wes Baker, Joe Herring

PUBLIC COMMENT:

There were no public comments.

ADMINISTRATIVE BUSINESS:

Mark Loughry requested approval of a check issued for a right-of-way acquisition on County Road 30.

A motion was made by Commissioner Mike Smith and seconded by Commissioner Kaaz to approve a \$8,000.00 check for the right-of-way acquisition.

Motion passed, 4-0, Commissioner Doug Smith abstained.

Commissioner Doug Smith reported local government day is January 25th.

A motion was made by Commissioner Culbertson and seconded by Commissioner Kaaz to accept the consent agenda for Wednesday, December 28, 2022 as presented.

Motion passed, 5-0.

Krystal Voth presented Resolution 2022-28, a request for rezone from RR-5 to RR-2.5 located on 203rd St.

A motion was made by Commissioner Doug Smith and seconded by Commissioner Kaaz to approve Resolution 2022-28, a rezone request from RR-5 to RR-2.5 located at 21420 203rd St.

Motion passed, 5-0.

Commissioner Stieben met with Lisa Haack with LCDC.

Commissioner Kaaz attended a KCATA meeting and Workforce Partnership meeting.

Commissioner Mike Smith will attend the LCDC Annual Meeting on January 20th.

The Board briefly discussed the battery plant that will be located in DeSoto as regards to potential additional development and infrastructure.

A motion was made by Commissioner Kaaz and seconded by Commissioner Stieben to adjourn.

Motion passed, 5-0.

The Board adjourned at 9:14 a.m.

LEAVENWORTH COUNTY COMMISSIONERS MEETING SCHEDULE

Monday, January 9, 2023

Tuesday, January 10, 2023

11:00 a.m. Swearing in of Commissioners
• Justice Center

Wednesday, January 11, 2023

9:00 a.m. Leavenworth County Commission meeting
• Commission Meeting Room, 300 Walnut, Leavenworth KS

Thursday, January 12, 2023

Friday, January 13, 2023

ALL SUCH OTHER BUSINESS THAT MAY COME BEFORE THE COMMISSION

ALL MEETINGS ARE OPEN TO THE PUBLIC

COMMENTS SHOULD BE OF GENERAL INTEREST OF THE PUBLIC AND SUBJECT TO THE RULES OF DECORUM

START DATE: 12/24/2022 END DATE: 12/30/2022

TYPES OF CHECKS SELECTED: * ALL TYPES

			P.O.NUMBER	CHECK#					
2138	ABSOLUTE COMFORT TEC	ABSOLUTE COMFORT TECHNOLOGIES	332156	101629 AP	12/29/2022	2-001-5-31-297	SVC CALL 725 LAMING	620.46	
4120	ACE IMAGEWEAR	AAA LAUNDRY & LINEN SUPPLY CO	332183	101656 AP	12/30/2022	2-001-5-53-215	4013-01994 UNIFORM RENTALS NOX	75.64	
1513	ADVANCED AUTOMOTIVE	ADVANCED AUTOMOTIVE	332184	101657 AP	12/30/2022	2-001-5-05-213	EMS VEH MAINT/VEH MAINT SUPPLY	836.39	
1513	ADVANCED AUTOMOTIVE	ADVANCED AUTOMOTIVE	332184	101657 AP	12/30/2022	2-001-5-05-213	EMS VEH MAINT/VEH MAINT SUPPLY	508.54	
1513	ADVANCED AUTOMOTIVE	ADVANCED AUTOMOTIVE	332184	101657 AP	12/30/2022	2-001-5-05-213	EMS VEH MAINT/VEH MAINT SUPPLY	1,358.89	
1513	ADVANCED AUTOMOTIVE	ADVANCED AUTOMOTIVE	332184	101657 AP	12/30/2022	2-001-5-05-213	EMS VEH MAINT/VEH MAINT SUPPLY	814.39	
1513	ADVANCED AUTOMOTIVE	ADVANCED AUTOMOTIVE	332184	101657 AP	12/30/2022	2-001-5-05-213	EMS VEH MAINT/VEH MAINT SUPPLY	378.03	
1513	ADVANCED AUTOMOTIVE	ADVANCED AUTOMOTIVE	332184	101657 AP	12/30/2022	2-001-5-05-213	EMS VEH MAINT/VEH MAINT SUPPLY	532.39	
1513	ADVANCED AUTOMOTIVE	ADVANCED AUTOMOTIVE	332184	101657 AP	12/30/2022	2-001-5-05-213	EMS VEH MAINT/VEH MAINT SUPPLY	722.39	
1513	ADVANCED AUTOMOTIVE	ADVANCED AUTOMOTIVE	332184	101657 AP	12/30/2022	2-001-5-05-213	EMS VEH MAINT/VEH MAINT SUPPLY	191.90	
1513	ADVANCED AUTOMOTIVE	ADVANCED AUTOMOTIVE	332184	101657 AP	12/30/2022	2-001-5-05-306	EMS VEH MAINT/VEH MAINT SUPPLY	1,373.02	
1513	ADVANCED AUTOMOTIVE	ADVANCED AUTOMOTIVE	332184	101657 AP	12/30/2022	2-001-5-05-306	EMS VEH MAINT/VEH MAINT SUPPLY	25.18	
1513	ADVANCED AUTOMOTIVE	ADVANCED AUTOMOTIVE	332184	101657 AP	12/30/2022	2-001-5-05-306	EMS VEH MAINT/VEH MAINT SUPPLY	2,292.61	
1513	ADVANCED AUTOMOTIVE	ADVANCED AUTOMOTIVE	332184	101657 AP	12/30/2022	2-001-5-05-306	EMS VEH MAINT/VEH MAINT SUPPLY	1,017.98	
1513	ADVANCED AUTOMOTIVE	ADVANCED AUTOMOTIVE	332184	101657 AP	12/30/2022	2-001-5-05-306	EMS VEH MAINT/VEH MAINT SUPPLY	420.53	
1513	ADVANCED AUTOMOTIVE	ADVANCED AUTOMOTIVE	332184	101657 AP	12/30/2022	2-001-5-05-306	EMS VEH MAINT/VEH MAINT SUPPLY	1,013.16	
1513	ADVANCED AUTOMOTIVE	ADVANCED AUTOMOTIVE	332184	101657 AP	12/30/2022	2-001-5-05-306	EMS VEH MAINT/VEH MAINT SUPPLY	680.37	
1513	ADVANCED AUTOMOTIVE	ADVANCED AUTOMOTIVE	332184	101657 AP	12/30/2022	2-001-5-05-306	EMS VEH MAINT/VEH MAINT SUPPLY	9.50	
							*** VENDOR 1513 TOTAL		12,175.27
20588	ADVANTAGE	ADVANTAGE PRINTING	332185	101658 AP	12/30/2022	2-001-5-19-301	288 DIST CT CSO BUSINESS CARDS	85.00	
1537	ARV - PARTS	AMERICAN RESPONSE VEHICLE INC	332186	101659 AP	12/30/2022	2-001-5-05-306	MIRROR ASSEMBLY	328.14	
338	BEAR GRAPHICS	GOVERNMENT FORMS AND SUPPLIES	332158	101631 AP	12/29/2022	2-001-5-41-306	APPRAISER WINDOW & RETURN ENVE	1,286.00	
1523	BOB BARKER	BOB BARKER CO INC	332159	101632 AP	12/29/2022	2-001-5-07-359	LEAKS4 JAIL SUPPLIES	627.48	
23537	BOUND TREE	BOUND TREE MEDICAL LLC	332188	101661 AP	12/30/2022	2-001-5-05-381	EMS 113712 FIELD SUPPLIES	1,266.80	
23537	BOUND TREE	BOUND TREE MEDICAL LLC	332188	101661 AP	12/30/2022	2-001-5-05-381	EMS 113712 FIELD SUPPLIES	421.00	
23537	BOUND TREE	BOUND TREE MEDICAL LLC	332188	101661 AP	12/30/2022	2-001-5-05-381	EMS 113712 FIELD SUPPLIES	270.00	
23537	BOUND TREE	BOUND TREE MEDICAL LLC	332188	101661 AP	12/30/2022	2-001-5-05-381	EMS 113712 FIELD SUPPLIES	305.60	
23537	BOUND TREE	BOUND TREE MEDICAL LLC	332188	101661 AP	12/30/2022	2-001-5-05-381	EMS 113712 FIELD SUPPLIES	582.11	
							*** VENDOR 23537 TOTAL		2,845.51
24545	CDW GOVERN	CDW GOVERNMENT INC	332125	101614 AP	12/28/2022	2-001-5-07-362	11106763 LVSO LAPTOPS	33,150.00	
24545	CDW GOVERN	CDW GOVERNMENT INC	332125	101614 AP	12/28/2022	2-001-5-07-362	11106763 LVSO COMPUTER EQUIPME	3,290.00	
24545	CDW GOVERN	CDW GOVERNMENT INC	332125	101614 AP	12/28/2022	2-001-5-07-362	11106763 LVSO COMPUTER EQUIPME	2,200.00	
24545	CDW GOVERN	CDW GOVERNMENT INC	332191	101664 AP	12/30/2022	2-001-5-07-362	11106763 HP PRINTER FOR CIVIL	845.48	
							*** VENDOR 24545 TOTAL		39,485.48
1875	CMI INC	CMI INC	332192	101665 AP	12/30/2022	2-001-5-07-353	102862 MOUTHPIECES FOR INTOXIL	51.30	
648	COMMERCE BANK-COMMER	COMMERCE BANK-COMMERCIAL CARDS	332160	101634 AP	12/29/2022	2-001-5-02-212	IRON MOUNTAIN SHREDDING	23.67	
648	COMMERCE BANK-COMMER	COMMERCE BANK-COMMERCIAL CARDS	332126	101618 AP	12/28/2022	2-001-5-02-301	ELECTION EQUIP DELIVERY,POSTAG	80.31	
648	COMMERCE BANK-COMMER	COMMERCE BANK-COMMERCIAL CARDS	332160	101634 AP	12/29/2022	2-001-5-02-301	CO CLERK SUPPLIES (AMAZON)	7.91	
648	COMMERCE BANK-COMMER	COMMERCE BANK-COMMERCIAL CARDS	332160	101634 AP	12/29/2022	2-001-5-02-301	CO CLERK SUPPLIES (AMAZON)	20.99	
648	COMMERCE BANK-COMMER	COMMERCE BANK-COMMERCIAL CARDS	332160	101634 AP	12/29/2022	2-001-5-02-301	CO CLERK SUPPLIES (AMAZON)	48.97	
648	COMMERCE BANK-COMMER	COMMERCE BANK-COMMERCIAL CARDS	332193	101667 AP	12/30/2022	2-001-5-02-301	COUNTY CLERK:1ST FLOOR LUNCH	33.69	
648	COMMERCE BANK-COMMER	COMMERCE BANK-COMMERCIAL CARDS	332193	101667 AP	12/30/2022	2-001-5-02-301	COUNTY CLERK:1ST FLOOR LUNCH	62.67	
648	COMMERCE BANK-COMMER	COMMERCE BANK-COMMERCIAL CARDS	332193	101667 AP	12/30/2022	2-001-5-02-301	COUNTY CLERK:1ST FLOOR LUNCH	88.20	
648	COMMERCE BANK-COMMER	COMMERCE BANK-COMMERCIAL CARDS	332126	101618 AP	12/28/2022	2-001-5-02-302	ELECTION EQUIP DELIVERY,POSTAG	16.79	
648	COMMERCE BANK-COMMER	COMMERCE BANK-COMMERCIAL CARDS	332193	101667 AP	12/30/2022	2-001-5-04-205	ROD - FUEL	21.30	
648	COMMERCE BANK-COMMER	COMMERCE BANK-COMMERCIAL CARDS	332126	101618 AP	12/28/2022	2-001-5-04-301	REG OF DEEDS PFA BOOTH FOR 2/	27.28	
648	COMMERCE BANK-COMMER	COMMERCE BANK-COMMERCIAL CARDS	332193	101667 AP	12/30/2022	2-001-5-05-205	EMS DECEMBER ACTIVITY	3.55	
648	COMMERCE BANK-COMMER	COMMERCE BANK-COMMERCIAL CARDS	332160	101634 AP	12/29/2022	2-001-5-05-210	AT&T WIRELESS EMS	274.40	
648	COMMERCE BANK-COMMER	COMMERCE BANK-COMMERCIAL CARDS	332126	101618 AP	12/28/2022	2-001-5-05-213	EMS:FIELD &MAINT SUPPLY,UNIFOR	19.99	
648	COMMERCE BANK-COMMER	COMMERCE BANK-COMMERCIAL CARDS	332160	101634 AP	12/29/2022	2-001-5-05-215	WASTE MGMT - EMS 9103	139.05	
648	COMMERCE BANK-COMMER	COMMERCE BANK-COMMERCIAL CARDS	332160	101634 AP	12/29/2022	2-001-5-05-215	TONGANOXIE WATER EMS 9103	81.10	
648	COMMERCE BANK-COMMER	COMMERCE BANK-COMMERCIAL CARDS	332160	101634 AP	12/29/2022	2-001-5-05-215	FREESTATE ELEC SVC EMS 9102	209.20	

START DATE: 12/24/2022 END DATE: 12/30/2022

TYPES OF CHECKS SELECTED: * ALL TYPES

			P.O. NUMBER	CHECK#						
648	COMMERCE BANK-COMMER	COMMERCE BANK-COMMERCIAL CARDS	332126	101618 AP	12/28/2022	2-001-5-05-216	EMS FIELD/OFC SUPPLY, CABLE, RED		486.23	
648	COMMERCE BANK-COMMER	COMMERCE BANK-COMMERCIAL CARDS	332193	101667 AP	12/30/2022	2-001-5-05-216	EMS DECEMBER ACTIVITY		168.09	
648	COMMERCE BANK-COMMER	COMMERCE BANK-COMMERCIAL CARDS	332160	101634 AP	12/29/2022	2-001-5-05-280	MIDWEST MOBILE RADIO - EMS		438.00	
648	COMMERCE BANK-COMMER	COMMERCE BANK-COMMERCIAL CARDS	332126	101618 AP	12/28/2022	2-001-5-05-282	EMS FIELD/OFC SUPPLY, CABLE, RED		363.31	
648	COMMERCE BANK-COMMER	COMMERCE BANK-COMMERCIAL CARDS	332193	101667 AP	12/30/2022	2-001-5-05-282	EMS DECEMBER ACTIVITY		363.31	
648	COMMERCE BANK-COMMER	COMMERCE BANK-COMMERCIAL CARDS	332126	101618 AP	12/28/2022	2-001-5-05-301	EMS FIELD/OFC SUPPLY, CABLE, RED		411.24	
648	COMMERCE BANK-COMMER	COMMERCE BANK-COMMERCIAL CARDS	332126	101618 AP	12/28/2022	2-001-5-05-302	EMS:FIELD &MAINT SUPPLY,UNIFOR		36.00	
648	COMMERCE BANK-COMMER	COMMERCE BANK-COMMERCIAL CARDS	332126	101618 AP	12/28/2022	2-001-5-05-306	EMS:FIELD &MAINT SUPPLY,UNIFOR		169.88	
648	COMMERCE BANK-COMMER	COMMERCE BANK-COMMERCIAL CARDS	332193	101667 AP	12/30/2022	2-001-5-05-306	EMS MOREY DECEMBER ACTIVITY		335.76	
648	COMMERCE BANK-COMMER	COMMERCE BANK-COMMERCIAL CARDS	332193	101667 AP	12/30/2022	2-001-5-05-306	EMS MOREY DECEMBER ACTIVITY		9.34	
648	COMMERCE BANK-COMMER	COMMERCE BANK-COMMERCIAL CARDS	332126	101618 AP	12/28/2022	2-001-5-05-350	EMS:FIELD &MAINT SUPPLY,UNIFOR		57.20	
648	COMMERCE BANK-COMMER	COMMERCE BANK-COMMERCIAL CARDS	332126	101618 AP	12/28/2022	2-001-5-05-350	EMS FIELD/OFC SUPPLY, CABLE, RED		14.25	
648	COMMERCE BANK-COMMER	COMMERCE BANK-COMMERCIAL CARDS	332126	101618 AP	12/28/2022	2-001-5-05-381	EMS:FIELD &MAINT SUPPLY,UNIFOR		63.70	
648	COMMERCE BANK-COMMER	COMMERCE BANK-COMMERCIAL CARDS	332126	101618 AP	12/28/2022	2-001-5-05-381	EMS:FIELD &MAINT SUPPLY,UNIFOR		29.74	
648	COMMERCE BANK-COMMER	COMMERCE BANK-COMMERCIAL CARDS	332126	101618 AP	12/28/2022	2-001-5-05-381	EMS:FIELD &MAINT SUPPLY,UNIFOR		20.20	
648	COMMERCE BANK-COMMER	COMMERCE BANK-COMMERCIAL CARDS	332126	101618 AP	12/28/2022	2-001-5-05-381	EMS FIELD/OFC SUPPLY, CABLE, RED		6,601.75	
648	COMMERCE BANK-COMMER	COMMERCE BANK-COMMERCIAL CARDS	332193	101667 AP	12/30/2022	2-001-5-05-381	EMS:BAILEY DECEMBER ACTIVITY		47.98	
648	COMMERCE BANK-COMMER	COMMERCE BANK-COMMERCIAL CARDS	332193	101667 AP	12/30/2022	2-001-5-05-381	EMS MOREY DECEMBER ACTIVITY		98.27	
648	COMMERCE BANK-COMMER	COMMERCE BANK-COMMERCIAL CARDS	332193	101667 AP	12/30/2022	2-001-5-05-381	EMS MOREY DECEMBER ACTIVITY		75.31	
648	COMMERCE BANK-COMMER	COMMERCE BANK-COMMERCIAL CARDS	332193	101667 AP	12/30/2022	2-001-5-05-381	EMS C JOHNSON DECEMBER ACTIVIT		20.00	
648	COMMERCE BANK-COMMER	COMMERCE BANK-COMMERCIAL CARDS	332193	101667 AP	12/30/2022	2-001-5-05-381	EMS C JOHNSON DECEMBER ACTIVIT		.20	
648	COMMERCE BANK-COMMER	COMMERCE BANK-COMMERCIAL CARDS	332193	101667 AP	12/30/2022	2-001-5-05-381	EMS DECEMBER ACTIVITY		1,324.48	
648	COMMERCE BANK-COMMER	COMMERCE BANK-COMMERCIAL CARDS	332193	101667 AP	12/30/2022	2-001-5-05-381	EMS DECEMBER ACTIVITY		53.57	
648	COMMERCE BANK-COMMER	COMMERCE BANK-COMMERCIAL CARDS	332193	101667 AP	12/30/2022	2-001-5-05-381	EMS DECEMBER ACTIVITY		204.86	
648	COMMERCE BANK-COMMER	COMMERCE BANK-COMMERCIAL CARDS	332193	101667 AP	12/30/2022	2-001-5-05-381	EMS DECEMBER ACTIVITY		450.00	
648	COMMERCE BANK-COMMER	COMMERCE BANK-COMMERCIAL CARDS	332193	101667 AP	12/30/2022	2-001-5-05-381	EMS DECEMBER ACTIVITY		1,385.18	
648	COMMERCE BANK-COMMER	COMMERCE BANK-COMMERCIAL CARDS	332126	101618 AP	12/28/2022	2-001-5-05-383	EMS FIELD/OFC SUPPLY, CABLE, RED		91.62	
648	COMMERCE BANK-COMMER	COMMERCE BANK-COMMERCIAL CARDS	332126	101618 AP	12/28/2022	2-001-5-06-202	PLANNING COMM, OFFICE SUPPLY,C		387.04	
648	COMMERCE BANK-COMMER	COMMERCE BANK-COMMERCIAL CARDS	332126	101618 AP	12/28/2022	2-001-5-06-205	PLANNING/CODE ENFORCEMENT -BOO		21.45	
648	COMMERCE BANK-COMMER	COMMERCE BANK-COMMERCIAL CARDS	332160	101634 AP	12/29/2022	2-001-5-06-216	AT&T MOBILITY WIRELESS MIFI PL		86.46	
648	COMMERCE BANK-COMMER	COMMERCE BANK-COMMERCIAL CARDS	332193	101667 AP	12/30/2022	2-001-5-06-216	PLANNING/CODE ENF SUPPLIES		788.00	
648	COMMERCE BANK-COMMER	COMMERCE BANK-COMMERCIAL CARDS	332126	101618 AP	12/28/2022	2-001-5-06-301	PLANNING COMM, OFFICE SUPPLY,C		1,709.76	
648	COMMERCE BANK-COMMER	COMMERCE BANK-COMMERCIAL CARDS	332126	101618 AP	12/28/2022	2-001-5-06-301	PLANNING COMM, OFFICE SUPPLY,C		325.00	
648	COMMERCE BANK-COMMER	COMMERCE BANK-COMMERCIAL CARDS	332126	101618 AP	12/28/2022	2-001-5-06-301	PLANNING COMM, OFFICE SUPPLY,C		260.50	
648	COMMERCE BANK-COMMER	COMMERCE BANK-COMMERCIAL CARDS	332193	101667 AP	12/30/2022	2-001-5-06-301	PLANNING/CODE ENF SUPPLIES		144.29	
648	COMMERCE BANK-COMMER	COMMERCE BANK-COMMERCIAL CARDS	332126	101618 AP	12/28/2022	2-001-5-06-306	PLANNING/CODE ENFORCEMENT -BOO		129.99	
648	COMMERCE BANK-COMMER	COMMERCE BANK-COMMERCIAL CARDS	332193	101667 AP	12/30/2022	2-001-5-07-202	LVSO TRAINING		100.00	
648	COMMERCE BANK-COMMER	COMMERCE BANK-COMMERCIAL CARDS	332193	101667 AP	12/30/2022	2-001-5-07-202	LVSO TRAINING		100.00	
648	COMMERCE BANK-COMMER	COMMERCE BANK-COMMERCIAL CARDS	332126	101618 AP	12/28/2022	2-001-5-07-203	LVSO AMMO,DUES,TVL,JAIL MAINT+		222.30	
648	COMMERCE BANK-COMMER	COMMERCE BANK-COMMERCIAL CARDS	332126	101618 AP	12/28/2022	2-001-5-07-203	LVSO AMMO,DUES,TVL,JAIL MAINT+		2,370.00	
648	COMMERCE BANK-COMMER	COMMERCE BANK-COMMERCIAL CARDS	332126	101618 AP	12/28/2022	2-001-5-07-203	LVSO OFFICE, JAIL, SHF, TECH, POST		65.00	
648	COMMERCE BANK-COMMER	COMMERCE BANK-COMMERCIAL CARDS	332193	101667 AP	12/30/2022	2-001-5-07-203	LVSO - WARD LICENSE, SUPPLIES,		166.00	
648	COMMERCE BANK-COMMER	COMMERCE BANK-COMMERCIAL CARDS	332160	101634 AP	12/29/2022	2-001-5-07-208	SHERIFF/EOC MIDWEST MOBILE RAD		1,640.00	
648	COMMERCE BANK-COMMER	COMMERCE BANK-COMMERCIAL CARDS	332160	101634 AP	12/29/2022	2-001-5-07-208	FIRST ADVANTAGE BACKGROUND CHE		36.72	
648	COMMERCE BANK-COMMER	COMMERCE BANK-COMMERCIAL CARDS	332160	101634 AP	12/29/2022	2-001-5-07-210	AT&T WIRELESS LVSO 5018		92.46	
648	COMMERCE BANK-COMMER	COMMERCE BANK-COMMERCIAL CARDS	332160	101634 AP	12/29/2022	2-001-5-07-210	AT&T WIRELESS TELEPHONE LVSO 1		4,359.44	
648	COMMERCE BANK-COMMER	COMMERCE BANK-COMMERCIAL CARDS	332126	101618 AP	12/28/2022	2-001-5-07-211	LVSO AMMO,DUES,TVL,JAIL MAINT+		1,108.08	
648	COMMERCE BANK-COMMER	COMMERCE BANK-COMMERCIAL CARDS	332126	101618 AP	12/28/2022	2-001-5-07-211	LVSO AMMO,DUES,TVL,JAIL MAINT+		125.90	
648	COMMERCE BANK-COMMER	COMMERCE BANK-COMMERCIAL CARDS	332126	101618 AP	12/28/2022	2-001-5-07-211	LVSO AMMO,DUES,TVL,JAIL MAINT+		125.90	
648	COMMERCE BANK-COMMER	COMMERCE BANK-COMMERCIAL CARDS	332126	101618 AP	12/28/2022	2-001-5-07-213	LVSO AMMO,DUES,TVL,JAIL MAINT+		41.81	
648	COMMERCE BANK-COMMER	COMMERCE BANK-COMMERCIAL CARDS	332193	101667 AP	12/30/2022	2-001-5-07-213	MAGAHA:VEH MAINT		14.99	
648	COMMERCE BANK-COMMER	COMMERCE BANK-COMMERCIAL CARDS	332193	101667 AP	12/30/2022	2-001-5-07-213	MAGAHA:VEH MAINT		14.99	

START DATE: 12/24/2022 END DATE: 12/30/2022

TYPES OF CHECKS SELECTED: * ALL TYPES

				P.O.NUMBER	CHECK#						
648	COMMERCE BANK-COMMER	COMMERCE BANK-COMMER	COMMERCE BANK-COMMERCIAL CARDS	332160	101634 AP	12/29/2022	2-001-5-07-216	CHARTER COMM - INTERNET FOR EO		74.99	
648	COMMERCE BANK-COMMER	COMMERCE BANK-COMMER	COMMERCE BANK-COMMERCIAL CARDS	332126	101618 AP	12/28/2022	2-001-5-07-219	LVSO AMMO,DUES,TVL,JAIL MAINT+		129.83	
648	COMMERCE BANK-COMMER	COMMERCE BANK-COMMER	COMMERCE BANK-COMMERCIAL CARDS	332126	101618 AP	12/28/2022	2-001-5-07-219	LVSO OFFICE,JAIL,SHF,TECH,POST		27.88	
648	COMMERCE BANK-COMMER	COMMERCE BANK-COMMER	COMMERCE BANK-COMMERCIAL CARDS	332160	101634 AP	12/29/2022	2-001-5-07-219	CHARTER COMMS - INTERNET/MENTA		182.00	
648	COMMERCE BANK-COMMER	COMMERCE BANK-COMMER	COMMERCE BANK-COMMERCIAL CARDS	332193	101667 AP	12/30/2022	2-001-5-07-219	LVSO WARDROP - DISP MEDICAL SU		35.16	
648	COMMERCE BANK-COMMER	COMMERCE BANK-COMMER	COMMERCE BANK-COMMERCIAL CARDS	332160	101634 AP	12/29/2022	2-001-5-07-223	12-34 FREESTATE ELEC SVC SIRES		377.50	
648	COMMERCE BANK-COMMER	COMMERCE BANK-COMMER	COMMERCE BANK-COMMERCIAL CARDS	332193	101667 AP	12/30/2022	2-001-5-07-251	LVSO - WARD LICENSE, SUPPLIES,		96.00	
648	COMMERCE BANK-COMMER	COMMERCE BANK-COMMER	COMMERCE BANK-COMMERCIAL CARDS	332126	101618 AP	12/28/2022	2-001-5-07-262	LVSO AMMO,DUES,TVL,JAIL MAINT+		2.99	
648	COMMERCE BANK-COMMER	COMMERCE BANK-COMMER	COMMERCE BANK-COMMERCIAL CARDS	332126	101618 AP	12/28/2022	2-001-5-07-301	LVSO AMMO,DUES,TVL,JAIL MAINT+		169.20	
648	COMMERCE BANK-COMMER	COMMERCE BANK-COMMER	COMMERCE BANK-COMMERCIAL CARDS	332126	101618 AP	12/28/2022	2-001-5-07-301	LVSO OFFICE,JAIL,SHF,TECH,POST		1,158.34	
648	COMMERCE BANK-COMMER	COMMERCE BANK-COMMER	COMMERCE BANK-COMMERCIAL CARDS	332193	101667 AP	12/30/2022	2-001-5-07-301	LVSO - WARD LICENSE, SUPPLIES,		34.16	
648	COMMERCE BANK-COMMER	COMMERCE BANK-COMMER	COMMERCE BANK-COMMERCIAL CARDS	332126	101618 AP	12/28/2022	2-001-5-07-302	LVSO OFFICE,JAIL,SHF,TECH,POST		54.08	
648	COMMERCE BANK-COMMER	COMMERCE BANK-COMMER	COMMERCE BANK-COMMERCIAL CARDS	332126	101618 AP	12/28/2022	2-001-5-07-351	LVSO AMMO,DUES,TVL,JAIL MAINT+		127.00	
648	COMMERCE BANK-COMMER	COMMERCE BANK-COMMER	COMMERCE BANK-COMMERCIAL CARDS	332126	101618 AP	12/28/2022	2-001-5-07-354	LVSO OFFICE,JAIL,SHF,TECH,POST		12.18	
648	COMMERCE BANK-COMMER	COMMERCE BANK-COMMER	COMMERCE BANK-COMMERCIAL CARDS	332126	101618 AP	12/28/2022	2-001-5-07-356	LVSO AMMO,DUES,TVL,JAIL MAINT+		2,945.00	
648	COMMERCE BANK-COMMER	COMMERCE BANK-COMMER	COMMERCE BANK-COMMERCIAL CARDS	332126	101618 AP	12/28/2022	2-001-5-07-357	LVSO AMMO,DUES,TVL,JAIL MAINT+		166.89	
648	COMMERCE BANK-COMMER	COMMERCE BANK-COMMER	COMMERCE BANK-COMMERCIAL CARDS	332126	101618 AP	12/28/2022	2-001-5-07-357	LVSO OFFICE,JAIL,SHF,TECH,POST		335.69	
648	COMMERCE BANK-COMMER	COMMERCE BANK-COMMER	COMMERCE BANK-COMMERCIAL CARDS	332193	101667 AP	12/30/2022	2-001-5-07-357	LVSO - WARD LICENSE, SUPPLIES,		123.74	
648	COMMERCE BANK-COMMER	COMMERCE BANK-COMMER	COMMERCE BANK-COMMERCIAL CARDS	332193	101667 AP	12/30/2022	2-001-5-07-357	LVSO-GWARTNEY - JAIL PLUMBING		20.49	
648	COMMERCE BANK-COMMER	COMMERCE BANK-COMMER	COMMERCE BANK-COMMERCIAL CARDS	332126	101618 AP	12/28/2022	2-001-5-07-359	LVSO AMMO,DUES,TVL,JAIL MAINT+		33.94	
648	COMMERCE BANK-COMMER	COMMERCE BANK-COMMER	COMMERCE BANK-COMMERCIAL CARDS	332126	101618 AP	12/28/2022	2-001-5-07-360	LVSO AMMO,DUES,TVL,JAIL MAINT+		300.98	
648	COMMERCE BANK-COMMER	COMMERCE BANK-COMMER	COMMERCE BANK-COMMERCIAL CARDS	332126	101618 AP	12/28/2022	2-001-5-07-360	LVSO AMMO,DUES,TVL,JAIL MAINT+		582.68	
648	COMMERCE BANK-COMMER	COMMERCE BANK-COMMER	COMMERCE BANK-COMMERCIAL CARDS	332126	101618 AP	12/28/2022	2-001-5-07-360	LVSO OFFICE,JAIL,SHF,TECH,POST		252.17	
648	COMMERCE BANK-COMMER	COMMERCE BANK-COMMER	COMMERCE BANK-COMMERCIAL CARDS	332126	101618 AP	12/28/2022	2-001-5-07-362	LVSO OFFICE,JAIL,SHF,TECH,POST		39.98	
648	COMMERCE BANK-COMMER	COMMERCE BANK-COMMER	COMMERCE BANK-COMMERCIAL CARDS	332126	101618 AP	12/28/2022	2-001-5-11-202	CO ATTY:WITNESS COSTS,LODGING,		672.64	
648	COMMERCE BANK-COMMER	COMMERCE BANK-COMMER	COMMERCE BANK-COMMERCIAL CARDS	332126	101618 AP	12/28/2022	2-001-5-11-202	CO ATTY:NDA WASH CONF REGISTR		300.00	
648	COMMERCE BANK-COMMER	COMMERCE BANK-COMMER	COMMERCE BANK-COMMERCIAL CARDS	332126	101618 AP	12/28/2022	2-001-5-11-213	CO ATTY:WITNESS COSTS,LODGING,		123.12	
648	COMMERCE BANK-COMMER	COMMERCE BANK-COMMER	COMMERCE BANK-COMMERCIAL CARDS	332126	101618 AP	12/28/2022	2-001-5-11-213	CO ATTY:NT:WITNESS,SUPPLIES		1,190.72	
648	COMMERCE BANK-COMMER	COMMERCE BANK-COMMER	COMMERCE BANK-COMMERCIAL CARDS	332126	101618 AP	12/28/2022	2-001-5-11-301	CO ATTY:WITNESS COSTS,LODGING,		24.66	
648	COMMERCE BANK-COMMER	COMMERCE BANK-COMMER	COMMERCE BANK-COMMERCIAL CARDS	332126	101618 AP	12/28/2022	2-001-5-11-301	CO ATTY:NT:WITNESS,SUPPLIES		1,447.34	
648	COMMERCE BANK-COMMER	COMMERCE BANK-COMMER	COMMERCE BANK-COMMERCIAL CARDS	332160	101634 AP	12/29/2022	2-001-5-14-210	SPECTRUM ACCESS FEES FOR COUNT		2,865.06	
648	COMMERCE BANK-COMMER	COMMERCE BANK-COMMER	COMMERCE BANK-COMMERCIAL CARDS	332160	101634 AP	12/29/2022	2-001-5-14-210	SPECTRUM - COMMUNICATION FEES		2,023.95	
648	COMMERCE BANK-COMMER	COMMERCE BANK-COMMER	COMMERCE BANK-COMMERCIAL CARDS	332160	101634 AP	12/29/2022	2-001-5-14-220	TONGANOXIE WATER - ANNEX		63.29	
648	COMMERCE BANK-COMMER	COMMERCE BANK-COMMER	COMMERCE BANK-COMMERCIAL CARDS	332160	101634 AP	12/29/2022	2-001-5-14-220	FREESTATE ELEC SVC 725 LAMING		651.93	
648	COMMERCE BANK-COMMER	COMMERCE BANK-COMMER	COMMERCE BANK-COMMERCIAL CARDS	332126	101618 AP	12/28/2022	2-001-5-14-332	LVSO AMMO,DUES,TVL,JAIL MAINT+		51.10	
648	COMMERCE BANK-COMMER	COMMERCE BANK-COMMER	COMMERCE BANK-COMMERCIAL CARDS	332126	101618 AP	12/28/2022	2-001-5-18-213	IS CONTRACTUAL ACCESS FEES		1,401.84	
648	COMMERCE BANK-COMMER	COMMERCE BANK-COMMER	COMMERCE BANK-COMMERCIAL CARDS	332160	101634 AP	12/29/2022	2-001-5-19-220	IRON MOUNTAIN SHREDDING		159.20	
648	COMMERCE BANK-COMMER	COMMERCE BANK-COMMER	COMMERCE BANK-COMMERCIAL CARDS	332126	101618 AP	12/28/2022	2-001-5-19-301	DIST CT - ROBE, JURY TEXTING		259.00	
648	COMMERCE BANK-COMMER	COMMERCE BANK-COMMER	COMMERCE BANK-COMMERCIAL CARDS	332160	101634 AP	12/29/2022	2-001-5-21-300	MIDWEST MOBILE RADIO ELC2 PROG		1,720.00	
648	COMMERCE BANK-COMMER	COMMERCE BANK-COMMER	COMMERCE BANK-COMMERCIAL CARDS	332160	101634 AP	12/29/2022	2-001-5-21-300	HELATH DEPT ELC2 MIDWEST MOBIL		1,264.31	
648	COMMERCE BANK-COMMER	COMMERCE BANK-COMMER	COMMERCE BANK-COMMERCIAL CARDS	332126	101618 AP	12/28/2022	2-001-5-23-203	ADMIN: IECD SUMMIT, TRAVEL		1,255.00	
648	COMMERCE BANK-COMMER	COMMERCE BANK-COMMER	COMMERCE BANK-COMMERCIAL CARDS	332126	101618 AP	12/28/2022	2-001-5-23-211	ADMIN: IECD SUMMIT, TRAVEL		404.47	
648	COMMERCE BANK-COMMER	COMMERCE BANK-COMMER	COMMERCE BANK-COMMERCIAL CARDS	332126	101618 AP	12/28/2022	2-001-5-28-223	HR: CHILI COOKOFF SUPPLIES		31.53	
648	COMMERCE BANK-COMMER	COMMERCE BANK-COMMER	COMMERCE BANK-COMMERCIAL CARDS	332160	101634 AP	12/29/2022	2-001-5-28-301	IRON MOUNTAIN SHREDDING		10.65	
648	COMMERCE BANK-COMMER	COMMERCE BANK-COMMER	COMMERCE BANK-COMMERCIAL CARDS	332154	101628 AP	12/28/2022	2-001-5-31-290	SPEC BLDG,FLR MAINT,CUSHING SU		305.32	
648	COMMERCE BANK-COMMER	COMMERCE BANK-COMMER	COMMERCE BANK-COMMERCIAL CARDS	332154	101628 AP	12/28/2022	2-001-5-31-291	SPEC BLDG,FLR MAINT,CUSHING SU		2,400.00	
648	COMMERCE BANK-COMMER	COMMERCE BANK-COMMER	COMMERCE BANK-COMMERCIAL CARDS	332154	101628 AP	12/28/2022	2-001-5-31-297	SPEC BLDG,FLR MAINT,CUSHING SU		68.00	
648	COMMERCE BANK-COMMER	COMMERCE BANK-COMMER	COMMERCE BANK-COMMERCIAL CARDS	332154	101628 AP	12/28/2022	2-001-5-31-301	SPEC BLDG,FLR MAINT,CUSHING SU		304.89	
648	COMMERCE BANK-COMMER	COMMERCE BANK-COMMER	COMMERCE BANK-COMMERCIAL CARDS	332126	101618 AP	12/28/2022	2-001-5-31-312	BG HERKEN:JC,CUSHING,CTHSE,TRA		125.77	
648	COMMERCE BANK-COMMER	COMMERCE BANK-COMMER	COMMERCE BANK-COMMERCIAL CARDS	332154	101628 AP	12/28/2022	2-001-5-31-312	SPEC BLDG,FLR MAINT,CUSHING SU		458.33	
648	COMMERCE BANK-COMMER	COMMERCE BANK-COMMER	COMMERCE BANK-COMMERCIAL CARDS	332126	101618 AP	12/28/2022	2-001-5-31-313	BG - HEALTH DEPT		59.82	
648	COMMERCE BANK-COMMER	COMMERCE BANK-COMMER	COMMERCE BANK-COMMERCIAL CARDS	332126	101618 AP	12/28/2022	2-001-5-31-315	BG HERKEN:JC,CUSHING,CTHSE,TRA		85.28	

START DATE: 12/24/2022 END DATE: 12/30/2022

TYPES OF CHECKS SELECTED: * ALL TYPES

			P.O.NUMBER	CHECK#						
648	COMMERCE BANK-COMMER	COMMERCE BANK-COMMERCIAL CARDS	332126	101618 AP	12/28/2022	2-001-5-31-383	BG-SAFETY SUPPLIES		123.91	
648	COMMERCE BANK-COMMER	COMMERCE BANK-COMMERCIAL CARDS	332126	101618 AP	12/28/2022	2-001-5-31-383	BG HERKEN:JC,CUSHING,CTHSE,TRA		161.99	
648	COMMERCE BANK-COMMER	COMMERCE BANK-COMMERCIAL CARDS	332154	101628 AP	12/28/2022	2-001-5-31-383	SPEC BLDG,FLR MAINT,CUSHING SU		284.99	
648	COMMERCE BANK-COMMER	COMMERCE BANK-COMMERCIAL CARDS	332154	101628 AP	12/28/2022	2-001-5-31-384	SPEC BLDG,FLR MAINT,CUSHING SU		803.36	
648	COMMERCE BANK-COMMER	COMMERCE BANK-COMMERCIAL CARDS	332154	101628 AP	12/28/2022	2-001-5-31-390	SPEC BLDG,FLR MAINT,CUSHING SU		803.36	
648	COMMERCE BANK-COMMER	COMMERCE BANK-COMMERCIAL CARDS	332154	101628 AP	12/28/2022	2-001-5-32-297	SPEC BLDG,FLR MAINT,CUSHING SU		414.65	
648	COMMERCE BANK-COMMER	COMMERCE BANK-COMMERCIAL CARDS	332126	101618 AP	12/28/2022	2-001-5-32-391	BG HERKEN:JC,CUSHING,CTHSE,TRA		345.33	
648	COMMERCE BANK-COMMER	COMMERCE BANK-COMMERCIAL CARDS	332154	101628 AP	12/28/2022	2-001-5-32-391	SPEC BLDG,FLR MAINT,CUSHING SU		1,293.48	
648	COMMERCE BANK-COMMER	COMMERCE BANK-COMMERCIAL CARDS	332160	101634 AP	12/29/2022	2-001-5-33-297	WASTE MGMT DUMPSTER - CUSHING(773.78	
648	COMMERCE BANK-COMMER	COMMERCE BANK-COMMERCIAL CARDS	332126	101618 AP	12/28/2022	2-001-5-33-391	BG HERKEN:JC,CUSHING,CTHSE,TRA		119.92	
648	COMMERCE BANK-COMMER	COMMERCE BANK-COMMERCIAL CARDS	332154	101628 AP	12/28/2022	2-001-5-33-391	SPEC BLDG,FLR MAINT,CUSHING SU		1,151.83	
648	COMMERCE BANK-COMMER	COMMERCE BANK-COMMERCIAL CARDS	332126	101618 AP	12/28/2022	2-001-5-41-201	APPRAISR COPIES,DUES,OFFICE SU		45.04	
648	COMMERCE BANK-COMMER	COMMERCE BANK-COMMERCIAL CARDS	332126	101618 AP	12/28/2022	2-001-5-41-203	APPRAISR COPIES,DUES,OFFICE SU		240.00	
648	COMMERCE BANK-COMMER	COMMERCE BANK-COMMERCIAL CARDS	332126	101618 AP	12/28/2022	2-001-5-41-301	APPRAISR COPIES,DUES,OFFICE SU		34.99	
648	COMMERCE BANK-COMMER	COMMERCE BANK-COMMERCIAL CARDS	332193	101667 AP	12/30/2022	2-001-5-41-370	APPRAISER COMPUTER SUPPLIES, A		674.20	
648	COMMERCE BANK-COMMER	COMMERCE BANK-COMMERCIAL CARDS	332193	101667 AP	12/30/2022	2-001-5-41-371	APPRAISER COMPUTER SUPPLIES, A		429.96	
648	COMMERCE BANK-COMMER	COMMERCE BANK-COMMERCIAL CARDS	332126	101618 AP	12/28/2022	2-001-5-42-286	GIS KS ASSOC OF MAPPERS, ESRI		287.50	
648	COMMERCE BANK-COMMER	COMMERCE BANK-COMMERCIAL CARDS	332126	101618 AP	12/28/2022	2-001-5-42-293	GIS KS ASSOC OF MAPPERS, ESRI		200.00	
648	COMMERCE BANK-COMMER	COMMERCE BANK-COMMERCIAL CARDS	332193	101667 AP	12/30/2022	2-001-5-42-293	ESRI CREDITS (GIS)		200.00	
648	COMMERCE BANK-COMMER	COMMERCE BANK-COMMERCIAL CARDS	332126	101618 AP	12/28/2022	2-001-5-49-204	ELECTION EQUIP DELIVERY,POSTAG		176.79	
648	COMMERCE BANK-COMMER	COMMERCE BANK-COMMERCIAL CARDS	332126	101618 AP	12/28/2022	2-001-5-49-204	PHILIPS:ELECTION EQUIP DELIVER		140.62	
648	COMMERCE BANK-COMMER	COMMERCE BANK-COMMERCIAL CARDS	332126	101618 AP	12/28/2022	2-001-5-53-203	PHILIPS:ELECTION EQUIP DELIVER		190.00	
648	COMMERCE BANK-COMMER	COMMERCE BANK-COMMERCIAL CARDS	332193	101667 AP	12/30/2022	2-001-5-53-203	NOX WEED TESTING		90.00	
648	COMMERCE BANK-COMMER	COMMERCE BANK-COMMERCIAL CARDS	332160	101634 AP	12/29/2022	2-001-5-53-207	WASTE MGMT - NOX WEED TRASH		94.61	
648	COMMERCE BANK-COMMER	COMMERCE BANK-COMMERCIAL CARDS	332126	101618 AP	12/28/2022	2-001-5-53-217	PHILIPS:ELECTION EQUIP DELIVER		129.99	
							*** VENDOR	648 TOTAL		64,883.21
1104	DIGITAL DOLPHIN	DIGITAL DOLPHIN SUPPLIES	332127	101619 AP	12/28/2022	2-001-5-07-301	1 DRUM UNIT (LVSO)		63.11	
8726	FAGAN COMPANY	FAGAN COMPANY	332194	101668 AP	12/30/2022	2-001-5-32-209	OCT 31 JC/CUSHING SVC CALLS		3,579.33	
8726	FAGAN COMPANY	FAGAN COMPANY	332163	101637 AP	12/29/2022	2-001-5-33-209	24520 SVC CALL 711 MARSHALL -		2,229.08	
8726	FAGAN COMPANY	FAGAN COMPANY	332194	101668 AP	12/30/2022	2-001-5-33-209	OCT 31 JC/CUSHING SVC CALLS		3,413.55	
8726	FAGAN COMPANY	FAGAN COMPANY	332194	101668 AP	12/30/2022	2-001-5-33-209	OCT 31 JC/CUSHING SVC CALLS		2,911.70	
							*** VENDOR	8726 TOTAL		12,133.66
711	FASTCASE, INC	FASTCASE, INC	332164	101638 AP	12/29/2022	2-001-5-07-208	LEGAL INFO KIOSK FOR INMATES		1,750.00	
1011	FEDEX	FEDEX	332195	101669 AP	12/30/2022	2-001-5-19-302	2389-5871-7 DIST CT TRANSPORTA		43.64	
29656	FILE SAFE	FILE SAFE INC	332165	101639 AP	12/29/2022	2-001-5-19-301	DIST CT 2023 YEARBANDS		23.50	
1751	INTACT INSURANCE	INTACT INSURANCE (FORMERLY ONE	332166	101640 AP	12/29/2022	2-001-5-14-224	791000617 DEDUCTIBLES 0AB		1,205.89	
1751	INTACT INSURANCE	INTACT INSURANCE (FORMERLY ONE	332166	101640 AP	12/29/2022	2-001-5-14-224	791000617 DEDUCTIBLES 0AB		502.20	
							*** VENDOR	1751 TOTAL		1,708.09
236	INTERPRETERS	INTERPRETERS INC	332198	101672 AP	12/30/2022	2-001-5-19-221	DIST CT INTERPRETERS 12/14, 12		393.55	
7655	J F DENNEY P	J F DENNEY PLUMBING & HEATING	332199	101673 AP	12/30/2022	2-001-5-31-296	LEAV03 SVC CALLS - TRANSFER ST		129.00	
7655	J F DENNEY P	J F DENNEY PLUMBING & HEATING	332199	101673 AP	12/30/2022	2-001-5-31-296	LEAV03 SVC CALLS - TRANSFER ST		99.00	
7655	J F DENNEY P	J F DENNEY PLUMBING & HEATING	332199	101673 AP	12/30/2022	2-001-5-31-296	LEAV03 SVC CALLS - TRANSFER ST		276.50	
							*** VENDOR	7655 TOTAL		504.50
99	JUROR	xxxxxxxxxxxxxxxxxxxx	332118	101611 AP	12/26/2022	2-001-5-19-205	DIST CT VOUCHER 368		25.00	
565	KA-COMM INC	KA-COMM INC	332128	101620 AP	12/28/2022	2-001-5-07-213	LVSO - LIGHT BARS,SIRENS,ETC,M		42,092.02	
565	KA-COMM INC	KA-COMM INC	332128	101620 AP	12/28/2022	2-001-5-07-213	LVSO - LIGHT BARS,SIRENS,ETC,M		1,138.98	
							*** VENDOR	565 TOTAL		43,231.00
1190	KAC	KANSAS ASSN OF COUNTIES	332200	101674 AP	12/30/2022	2-001-5-01-203	2639700 2023 DUES		16,993.66	
12574	KANSAS JUD	KANSAS JUDICIAL BRANCH	332201	101675 AP	12/30/2022	2-001-5-19-301	2023 OFC365 LICENSES (13)FOR D		1,911.00	
1138	KELLER FIRE SAFETY	KELLER FIRE SAFETY	332129	101621 AP	12/28/2022	2-001-5-33-209	LEAVCI 711 MARSHALL - REPL DEF		3,395.00	
3197	KLM	LEAGUE OF KANSAS MUNICIPALITIE	332168	101642 AP	12/29/2022	2-001-5-06-207	KACM JOBS NEWSLETTER P&Z DIREC		100.00	
1842	KONE INC	KONE INC	332130	101622 AP	12/28/2022	2-001-5-33-209	N40131062 PASSGR ELEV 3 SVC CA		939.86	

warrants by vendor

TYPES OF CHECKS SELECTED: * ALL TYPES

			P.O.NUMBER	CHECK#					
219	LCDC	LEAVENWORTH COUNTY DEVELOPMENT	332202	101676 AP	12/30/2022	2-001-5-01-203	ANNUAL MEETING X6	210.00	
4755	LEAV PAPER	LEAVENWORTH PAPER AND OFFICE S	332204	101678 AP	12/30/2022	2-001-5-02-301	2 CHAIRS CO CLERK	1,060.00	
4755	LEAV PAPER	LEAVENWORTH PAPER AND OFFICE S	332204	101678 AP	12/30/2022	2-001-5-19-301	DIST CT CLERK OFFICE SUPLIES	67.74	
4755	LEAV PAPER	LEAVENWORTH PAPER AND OFFICE S	332204	101678 AP	12/30/2022	2-001-5-19-301	DIST CT CSO INK PAD	8.75	
4755	LEAV PAPER	LEAVENWORTH PAPER AND OFFICE S	332204	101678 AP	12/30/2022	2-001-5-19-301	DIST CT CSO OFFICE SUPPLIES	1,649.61	
							*** VENDOR	4755 TOTAL	2,786.10
537	LEAV TIMES	CHERRYROAD MEDIA INC	332205	101679 AP	12/30/2022	2-001-5-06-220	21250 LEGAL NOTICES	12.78	
537	LEAV TIMES	CHERRYROAD MEDIA INC	332205	101679 AP	12/30/2022	2-001-5-06-220	21250 LEGAL NOTICES	10.78	
537	LEAV TIMES	CHERRYROAD MEDIA INC	332205	101679 AP	12/30/2022	2-001-5-06-220	21250 LEGAL NOTICES	10.19	
537	LEAV TIMES	CHERRYROAD MEDIA INC	332205	101679 AP	12/30/2022	2-001-5-06-220	21250 LEGAL NOTICES	10.58	
							*** VENDOR	537 TOTAL	44.33
1694	LIONS CLUB	LIONS CLUB	332207	101681 AP	12/30/2022	2-001-5-11-203	TODD THOMPSON MEMBERSHIP DUES	18.00	
1694	LIONS CLUB	LIONS CLUB	332207	101681 AP	12/30/2022	2-001-5-11-203	TODD THOMPSON MEMBERSHIP DUES	29.00	
1694	LIONS CLUB	LIONS CLUB	332207	101681 AP	12/30/2022	2-001-5-11-203	TODD THOMPSON MEMBERSHIP DUES	29.00	
							*** VENDOR	1694 TOTAL	76.00
61	MIAMI CO DIST CT	DISTRICT COURT OF MIAMI COUNTY	332208	101682 AP	12/30/2022	2-001-5-19-222	ATTORNEY FEES MI-2022CT036 KER	60.00	
2059	MIDWEST OFFICE TECH	MIDWEST OFFICE TECHNOLOGY INC	332209	101683 AP	12/30/2022	2-001-5-02-304	COUNTY CLERK COPIER OPL303_K	16.15	
2059	MIDWEST OFFICE TECH	MIDWEST OFFICE TECHNOLOGY INC	332209	101683 AP	12/30/2022	2-001-5-21-300	OPK598_K HEALTH DEPT ELC2 PRIN	27.44	
2059	MIDWEST OFFICE TECH	MIDWEST OFFICE TECHNOLOGY INC	332209	101683 AP	12/30/2022	2-001-5-28-217	OPL289_K HUMAN RESOURCES COPIE	215.72	
							*** VENDOR	2059 TOTAL	259.31
2666	MISC REIMBURSEMENTS	TERRILOIS MASHBURN	332170	101644 AP	12/29/2022	2-001-5-04-302	REIM DISCOUNTED POSTAGE	149.99	
2666	MISC REIMBURSEMENTS	ROBERT OWEN	332169	101643 AP	12/29/2022	2-001-5-06-205	REIM MILEAGE PLANNING COMMISSI	41.25	
							*** VENDOR	2666 TOTAL	191.24
969	OVERHEAD D	OVERHEAD DOOR CO	332131	101623 AP	12/28/2022	2-001-5-07-359	32909 LV SO SVC CALL E SALLY P	1,076.20	
427	PEMBLE	JORDAN PEMBLE	332212	101686 AP	12/30/2022	2-001-5-09-231	VARIOUS CINC CASES - CONFLICT	3,090.00	
9759	PRICE CHOP	BALL'S FOOD STORES	332213	101687 AP	12/30/2022	2-001-5-19-205	DIST CT JURY SUPPLIES 91368404	27.96	
480	PROFESSIONAL DEVELOP	PROFESSIONAL DEVELOPMENT ACADE	332119	101612 AP	12/26/2022	2-001-5-07-202	C-13906 NACO HIGH PERF ADACEMY	2,495.00	
480	PROFESSIONAL DEVELOP	PROFESSIONAL DEVELOPMENT ACADE	332119	101612 AP	12/26/2022	2-001-5-07-202	C-13906 NACO HIGH PERF ADACEMY	850.00-	
							*** VENDOR	480 TOTAL	1,645.00
7098	QUILL CORP	QUILL CORP	332214	101688 AP	12/30/2022	2-001-5-07-301	8333027 SHF OFFICE SUPPLIES, J	320.46	
7098	QUILL CORP	QUILL CORP	332214	101688 AP	12/30/2022	2-001-5-07-301	8333027 SHF OFFICE SUPPLIES, J	150.93	
7098	QUILL CORP	QUILL CORP	332214	101688 AP	12/30/2022	2-001-5-07-301	8333027 SHF OFFICE SUPPLIES, J	163.43	
7098	QUILL CORP	QUILL CORP	332214	101688 AP	12/30/2022	2-001-5-07-301	8333027 SHF OFFICE SUPPLIES, J	5.32	
7098	QUILL CORP	QUILL CORP	332214	101688 AP	12/30/2022	2-001-5-07-301	8333027 SHF OFFICE SUPPLIES, J	336.32	
7098	QUILL CORP	QUILL CORP	332214	101688 AP	12/30/2022	2-001-5-07-301	8333027 SHF OFFICE SUPPLIES, J	21.84	
7098	QUILL CORP	QUILL CORP	332214	101688 AP	12/30/2022	2-001-5-07-301	8333027 SHF OFFICE SUPPLIES, J	205.21	
7098	QUILL CORP	QUILL CORP	332214	101688 AP	12/30/2022	2-001-5-07-359	8333027 SHF OFFICE SUPPLIES, J	857.60	
							*** VENDOR	7098 TOTAL	2,061.11
6713	REILLY & S	REILLY & SONS INC	332132	101624 AP	12/28/2022	2-001-5-14-224	791-00-06-17-0007 INVOICE VOID	746.00	
458	ROAD & BRIDGE	LEAV CO PUBLIC WORKS	332215	101689 AP	12/30/2022	2-001-5-07-213	LVSO/EOC/JAIL FUEL, VEH MAINT	1,146.74	
458	ROAD & BRIDGE	LEAV CO PUBLIC WORKS	332215	101689 AP	12/30/2022	2-001-5-07-218	LVSO/EOC/JAIL FUEL, VEH MAINT	451.07	
458	ROAD & BRIDGE	LEAV CO PUBLIC WORKS	332215	101689 AP	12/30/2022	2-001-5-14-332	LVSO/EOC/JAIL FUEL, VEH MAINT	4,746.20	
458	ROAD & BRIDGE	LEAV CO PUBLIC WORKS	332215	101689 AP	12/30/2022	2-001-5-14-332	LVSO/EOC/JAIL FUEL, VEH MAINT	471.32	
							*** VENDOR	458 TOTAL	6,815.33
201	SASSI INSTITUTE	THE SASSI INSTITUTE	332172	101646 AP	12/29/2022	2-001-5-19-301	KSLEAV SASSI TEST DOCS	470.00	
17368	SECURITY T	SECURITY TRANSPORT SERVICES	332173	101647 AP	12/29/2022	2-001-5-07-218	TRANSPORT INMATE FL DOC TO LVC	4,036.71	
1633	SMITH DOUG	DOUG SMITH	332120	101613 AP	12/26/2022	2-001-5-01-211	REIM MILEAGE 7/13-12/20/22	413.13	
915	SMITHEREEN PEST MANA	SMITHEREEN PEST MANAGEMENT	332133	101625 AP	12/28/2022	2-001-5-31-212	204513 DEC SVC,TERMITE	368.00	
915	SMITHEREEN PEST MANA	SMITHEREEN PEST MANAGEMENT	332133	101625 AP	12/28/2022	2-001-5-31-212	204513 DEC SVC,TERMITE	590.00	
915	SMITHEREEN PEST MANA	SMITHEREEN PEST MANAGEMENT	332133	101625 AP	12/28/2022	2-001-5-31-212	204513 DEC SVC,TERMITE	127.00	
915	SMITHEREEN PEST MANA	SMITHEREEN PEST MANAGEMENT	332133	101625 AP	12/28/2022	2-001-5-32-211	204513 DEC SVC,TERMITE	85.00	
							*** VENDOR	915 TOTAL	1,170.00

START DATE: 12/24/2022 END DATE: 12/30/2022

TYPES OF CHECKS SELECTED: * ALL TYPES

			P.O.NUMBER	CHECK#						
248	SUMMIT FOOD	ELIOR, INC	332174	101648 AP	12/29/2022	2-001-5-07-261	C741000 INMATE MEALS		5,639.33	
248	SUMMIT FOOD	ELIOR, INC	332174	101648 AP	12/29/2022	2-001-5-07-261	C741000 INMATE MEALS		5,586.71	
							*** VENDOR	248 TOTAL		11,226.04
376	SYMMETRY	ATHENS ENERGY SERVICES HOLDING	332134	101626 AP	12/28/2022	2-001-5-33-392	413714 GAS SERVICE 711 MARSHAL		607.51-	
376	SYMMETRY	ATHENS ENERGY SERVICES HOLDING	332134	101626 AP	12/28/2022	2-001-5-33-392	413714 GAS SERVICE 711 MARSHAL		545.89-	
376	SYMMETRY	ATHENS ENERGY SERVICES HOLDING	332134	101626 AP	12/28/2022	2-001-5-33-392	413714 GAS SERVICE 711 MARSHAL		223.88	
376	SYMMETRY	ATHENS ENERGY SERVICES HOLDING	332134	101626 AP	12/28/2022	2-001-5-33-392	413714 GAS SERVICE 711 MARSHAL		547.65-	
376	SYMMETRY	ATHENS ENERGY SERVICES HOLDING	332134	101626 AP	12/28/2022	2-001-5-33-392	413714 GAS SERVICE 711 MARSHAL		.31-	
376	SYMMETRY	ATHENS ENERGY SERVICES HOLDING	332134	101626 AP	12/28/2022	2-001-5-33-392	413714 GAS SERVICE 711 MARSHAL		1.97	
376	SYMMETRY	ATHENS ENERGY SERVICES HOLDING	332134	101626 AP	12/28/2022	2-001-5-33-392	413714 GAS SERVICE 711 MARSHAL		5.65	
376	SYMMETRY	ATHENS ENERGY SERVICES HOLDING	332134	101626 AP	12/28/2022	2-001-5-33-392	413714 GAS SERVICE 711 MARSHAL		286.86	
376	SYMMETRY	ATHENS ENERGY SERVICES HOLDING	332134	101626 AP	12/28/2022	2-001-5-33-392	413714 GAS SERVICE 711 MARSHAL		1,910.11	
							*** VENDOR	376 TOTAL		727.11
56	TONGANOXIE MIRROR	THE TONGANOXIE MIRROR	332175	101649 AP	12/29/2022	2-001-5-02-209	CO CLERK 1 YEAR SUB		42.00	
41	UNDERGROUN	UNDERGROUND VAULTS & STORAGE	332220	101694 AP	12/30/2022	2-001-5-19-214	100492 DIST CT FILE RETRIEVAL		23.21	
575	US POSTAL SERVICE	US POSTAL SERVICE (QUADIENT-PO	332222	101696 AP	12/30/2022	2-001-5-01-302	NOVEMBER POSTAGE TAX SALE/BOCC		29.24	
575	US POSTAL SERVICE	US POSTAL SERVICE (QUADIENT-PO	332222	101696 AP	12/30/2022	2-001-5-01-302	NOVEMBER POSTAGE TAX SALE/BOCC		.00	
575	US POSTAL SERVICE	US POSTAL SERVICE (QUADIENT-PO	332222	101696 AP	12/30/2022	2-001-5-02-302	NOVEMBER POSTAGE CLERK, ELECTI		14.82	
575	US POSTAL SERVICE	US POSTAL SERVICE (QUADIENT-PO	332222	101696 AP	12/30/2022	2-001-5-02-302	NOVEMBER POSTAGE CLERK, ELECTI		455.20	
575	US POSTAL SERVICE	US POSTAL SERVICE (QUADIENT-PO	332222	101696 AP	12/30/2022	2-001-5-02-302	NOVEMBER POSTAGE CLERK, ELECTI		102.86	
575	US POSTAL SERVICE	US POSTAL SERVICE (QUADIENT-PO	332222	101696 AP	12/30/2022	2-001-5-03-302	NOVEMBER POSTAGE - CO TREAS		46.66	
575	US POSTAL SERVICE	US POSTAL SERVICE (QUADIENT-PO	332222	101696 AP	12/30/2022	2-001-5-04-302	NOVEMBER POSTAGE REG OF DEEDS		6.84	
575	US POSTAL SERVICE	US POSTAL SERVICE (QUADIENT-PO	332222	101696 AP	12/30/2022	2-001-5-05-302	NOVEMBER POSTAGE EMS		706.29	
575	US POSTAL SERVICE	US POSTAL SERVICE (QUADIENT-PO	332222	101696 AP	12/30/2022	2-001-5-06-302	NOVEMBER POSTAGE PLANNING/ZONI		43.38	
575	US POSTAL SERVICE	US POSTAL SERVICE (QUADIENT-PO	332222	101696 AP	12/30/2022	2-001-5-07-302	NOVEMBER POSTAGE SHERIFF		319.14	
575	US POSTAL SERVICE	US POSTAL SERVICE (QUADIENT-PO	332222	101696 AP	12/30/2022	2-001-5-09-232	NOVEMBER POSTAGE TAX SALE/BOCC		71.81	
575	US POSTAL SERVICE	US POSTAL SERVICE (QUADIENT-PO	332222	101696 AP	12/30/2022	2-001-5-11-302	NOVEMBER POSTAGE CO ATTY		459.51	
575	US POSTAL SERVICE	US POSTAL SERVICE (QUADIENT-PO	332222	101696 AP	12/30/2022	2-001-5-14-302	NOVEMBER POSTAGE CLERK, ELECTI		11.13	
575	US POSTAL SERVICE	US POSTAL SERVICE (QUADIENT-PO	332222	101696 AP	12/30/2022	2-001-5-19-302	NOV POSTAGE DISTRICT COURT		1,787.54	
575	US POSTAL SERVICE	US POSTAL SERVICE (QUADIENT-PO	332222	101696 AP	12/30/2022	2-001-5-28-302	NOVEMBER POSTAGE HR		50.46	
575	US POSTAL SERVICE	US POSTAL SERVICE (QUADIENT-PO	332222	101696 AP	12/30/2022	2-001-5-41-302	NOVEMBER POSTAGE - APPRAISER		223.77	
575	US POSTAL SERVICE	US POSTAL SERVICE (QUADIENT-PO	332222	101696 AP	12/30/2022	2-001-5-53-301	NOX WEED NOV POSTAGE		2.28	
							*** VENDOR	575 TOTAL		4,330.93
276	WEX	WEX BANK	332225	46	12/30/2022	2-001-5-11-253	CO ATTY FUEL TO 12.23.22		50.41	
276	WEX	WEX BANK	332225	46	12/30/2022	2-001-5-14-331	EMS FUEL TO 12.23.22		9,733.29	
276	WEX	WEX BANK	332225	46	12/30/2022	2-001-5-14-332	SHERIFF/EOC GASOLINE TO 12.23.		5,428.52	
276	WEX	WEX BANK	332225	46	12/30/2022	2-001-5-14-332	SHERIFF/EOC GASOLINE TO 12.23.		52.63	
276	WEX	WEX BANK	332225	46	12/30/2022	2-001-5-14-334	APPRAISER FUEL TO 12.23.22		136.58	
276	WEX	WEX BANK	332225	46	12/30/2022	2-001-5-14-335	PLANNING/ZONING FUEL TO 12.23.		51.48	
276	WEX	WEX BANK	332225	46	12/30/2022	2-001-5-14-901	0496-00-668063-1 WEX REBATE		332.85-	
							*** VENDOR	276 TOTAL		15,120.06
655	WHELEN	WHELEN ENGINEERING CO	332224	101698 AP	12/30/2022	2-001-5-05-306	580832 FLASHER BLUE/RED		565.60	
100	WITNESS LIST	J								

warrants by vendor

TYPES OF CHECKS SELECTED: * ALL TYPES

		P.O.NUMBER	CHECK#							
100	WITNESS LIST							*** VENDOR	100 TOTAL	356.26
								TOTAL FUND 001		263,248.69
4938	BUILDING & GROUNDS	BUILDING & GROUNDS	332190	101663 AP	12/30/2022	2-108-5-00-219	HEALTH DEPT SHARED COSTS		983.80	
4938	BUILDING & GROUNDS	BUILDING & GROUNDS	332190	101663 AP	12/30/2022	2-108-5-00-606	HEALTH DEPT SHARED COSTS		327.93	
								*** VENDOR	4938 TOTAL	1,311.73
648	COMMERCE BANK-COMMER	COMMERCE BANK-COMMERCIAL CARDS	332126	101618 AP	12/28/2022	2-108-5-00-213	HEALTH DEPT:PP, CONTRACTUAL, PHE		64.00	
648	COMMERCE BANK-COMMER	COMMERCE BANK-COMMERCIAL CARDS	332193	101667 AP	12/30/2022	2-108-5-00-213	HEALTH DEPT WIC UTIL TVL, CONT		4.10	
648	COMMERCE BANK-COMMER	COMMERCE BANK-COMMERCIAL CARDS	332126	101618 AP	12/28/2022	2-108-5-00-219	HEALTH DEPT:PP, CONTRACTUAL, PHE		288.51	
648	COMMERCE BANK-COMMER	COMMERCE BANK-COMMERCIAL CARDS	332193	101667 AP	12/30/2022	2-108-5-00-219	HEALTH DEPT WIC UTIL TVL, CONT		285.80	
648	COMMERCE BANK-COMMER	COMMERCE BANK-COMMERCIAL CARDS	332126	101618 AP	12/28/2022	2-108-5-00-280	HEALTH DEPT:PP, CONTRACTUAL, PHE		1,402.22	
648	COMMERCE BANK-COMMER	COMMERCE BANK-COMMERCIAL CARDS	332193	101667 AP	12/30/2022	2-108-5-00-280	HEALTH DEPT WIC UTIL TVL, CONT		510.47	
648	COMMERCE BANK-COMMER	COMMERCE BANK-COMMERCIAL CARDS	332193	101667 AP	12/30/2022	2-108-5-00-280	HEALTH DEPT WIC UTIL TVL, CONT		67.99	
648	COMMERCE BANK-COMMER	COMMERCE BANK-COMMERCIAL CARDS	332126	101618 AP	12/28/2022	2-108-5-00-380	HEALTH DEPT:PP, CONTRACTUAL, PHE		149.30	
648	COMMERCE BANK-COMMER	COMMERCE BANK-COMMERCIAL CARDS	332126	101618 AP	12/28/2022	2-108-5-00-384	HEALTH DEPT:PP, CONTRACTUAL, PHE		1,111.94	
648	COMMERCE BANK-COMMER	COMMERCE BANK-COMMERCIAL CARDS	332126	101618 AP	12/28/2022	2-108-5-00-601	HEALTH DEPT:PP, CONTRACTUAL, PHE		107.08	
648	COMMERCE BANK-COMMER	COMMERCE BANK-COMMERCIAL CARDS	332160	101634 AP	12/29/2022	2-108-5-00-601	MIDWEST MOBILE RADIO (HEALTH D		75.00	
648	COMMERCE BANK-COMMER	COMMERCE BANK-COMMERCIAL CARDS	332126	101618 AP	12/28/2022	2-108-5-00-606	HEALTH DEPT:PP, CONTRACTUAL, PHE		266.31	
648	COMMERCE BANK-COMMER	COMMERCE BANK-COMMERCIAL CARDS	332193	101667 AP	12/30/2022	2-108-5-00-606	HEALTH DEPT WIC UTIL TVL, CONT		170.15	
648	COMMERCE BANK-COMMER	COMMERCE BANK-COMMERCIAL CARDS	332193	101667 AP	12/30/2022	2-108-5-00-606	HEALTH DEPT WIC UTIL TVL, CONT		95.26	
								*** VENDOR	648 TOTAL	4,598.13
575	US POSTAL SERVICE	US POSTAL SERVICE (QUADIENT-PO	332222	101696 AP	12/30/2022	2-108-5-00-302	HEALTH DEPT NOVEMBER POSTAGE		181.07	
575	US POSTAL SERVICE	US POSTAL SERVICE (QUADIENT-PO	332222	101696 AP	12/30/2022	2-108-5-00-606	HEALTH DEPT NOVEMBER POSTAGE		156.35	
								*** VENDOR	575 TOTAL	337.42
276	WEX	WEX BANK	332225	46	12/30/2022	2-108-5-00-304	HEALTH DEPT FUEL TO DEC 23		37.83	
								TOTAL FUND 108		6,285.11
648	COMMERCE BANK-COMMER	COMMERCE BANK-COMMERCIAL CARDS	332160	101634 AP	12/29/2022	2-117-5-00-202	AICPA WEBCAST SUB FOR ACCOUNTS		494.25	
648	COMMERCE BANK-COMMER	COMMERCE BANK-COMMERCIAL CARDS	332126	101618 AP	12/28/2022	2-117-5-00-301	CLERKS OFFICE - POCKETS FOR EQ		45.98	
								*** VENDOR	648 TOTAL	540.23
								TOTAL FUND 117		540.23
843	FIDLAR	FIDLAR	332196	101670 AP	12/30/2022	2-119-5-00-252	2010343 BASTION AVID HOSTING J		3,050.00	
								TOTAL FUND 119		3,050.00
648	COMMERCE BANK-COMMER	COMMERCE BANK-COMMERCIAL CARDS	332126	101618 AP	12/28/2022	2-123-5-00-301	COMM CORR SUPPLIES		99.49	
648	COMMERCE BANK-COMMER	COMMERCE BANK-COMMERCIAL CARDS	332160	101634 AP	12/29/2022	2-123-5-00-301	FIRSTNET COMM CORR		50.17	
								*** VENDOR	648 TOTAL	149.66
276	WEX	WEX BANK	332225	46	12/30/2022	2-123-5-00-301	COMM CORR FUEL TO 12.23.22		76.34	
								TOTAL FUND 123		226.00
648	COMMERCE BANK-COMMER	COMMERCE BANK-COMMERCIAL CARDS	332126	101618 AP	12/28/2022	2-126-5-00-210	COMM CORR INTERNET,STAFF LUNCH		40.01	
648	COMMERCE BANK-COMMER	COMMERCE BANK-COMMERCIAL CARDS	332160	101634 AP	12/29/2022	2-126-5-00-210	FIRSTNET COMM CORR		288.35	
648	COMMERCE BANK-COMMER	COMMERCE BANK-COMMERCIAL CARDS	332193	101667 AP	12/30/2022	2-126-5-00-210	COMM CORR - VERIZON WIRELESS		40.01	
648	COMMERCE BANK-COMMER	COMMERCE BANK-COMMERCIAL CARDS	332160	101634 AP	12/29/2022	2-126-5-00-225	IRON MOUNTAIN SHREDDING		14.98	
								*** VENDOR	648 TOTAL	383.35
1220	CULLIGAN OF GREATER	CULLIGAN OF GREATER KANSAS CIT	332161	101635 AP	12/29/2022	2-126-5-00-225	1220762 WATER/COOLER RENTAL		42.00	
7098	QUILL CORP	QUILL CORP	332214	101688 AP	12/30/2022	2-126-5-00-321	5645204 OFFICE SUPPLIES		82.77	
7098	QUILL CORP	QUILL CORP	332214	101688 AP	12/30/2022	2-126-5-00-321	5645204 OFFICE SUPPLIES		10.79	
7098	QUILL CORP	QUILL CORP	332214	101688 AP	12/30/2022	2-126-5-00-321	5645204 OFFICE SUPPLIES		37.99	

warrants by vendor

TYPES OF CHECKS SELECTED: * ALL TYPES

			P.O.NUMBER	CHECK#						
7098	QUILL CORP	QUILL CORP	332214	101688 AP	12/30/2022	2-126-5-00-321	5645204 OFFICE SUPPLIES	33.99		
							*** VENDOR		7098 TOTAL	165.54
113	SUMNERONE INC	SUMNERONE INC	332217	101691 AP	12/30/2022	2-126-5-00-321	50COL COPIER PARTS	113.78		
113	SUMNERONE INC	SUMNERONE INC	332217	101691 AP	12/30/2022	2-126-5-00-321	50ULC08 COPIER PARTS	165.06		
							*** VENDOR		113 TOTAL	278.84
575	US POSTAL SERVICE	US POSTAL SERVICE (QUADIENT-PO	332222	101696 AP	12/30/2022	2-126-5-00-321	ADT COMM CORR NOVEMBER POSTAGE	81.93		
							TOTAL FUND 126			951.66
648	COMMERCE BANK-COMMER	COMMERCE BANK-COMMERCIAL CARDS	332126	101618 AP	12/28/2022	2-127-5-00-3	COMM CORR - STAFF LUNCH	221.78		
648	COMMERCE BANK-COMMER	COMMERCE BANK-COMMERCIAL CARDS	332126	101618 AP	12/28/2022	2-127-5-00-3	COMM CORR INTERNET,STAFF LUNCH	119.66		
							*** VENDOR		648 TOTAL	341.44
							TOTAL FUND 127			341.44
4120	ACE IMAGEWEAR	AAA LAUNDRY & LINEN SUPPLY CO	332183	101656 AP	12/30/2022	2-133-5-00-215	12-51 4013-01993 UNFIROMS, SHO	241.55		
4120	ACE IMAGEWEAR	AAA LAUNDRY & LINEN SUPPLY CO	332183	101656 AP	12/30/2022	2-133-5-00-312	12-51 4013-01993 UNFIROMS, SHO	201.92		
							*** VENDOR		4120 TOTAL	443.47
117	BUILDEX, LLC	HAMM INC (FORMERLY BUILDEX)	332189	101662 AP	12/30/2022	2-133-5-00-361	12-50 430742 3/4 X 8 CML	65,502.45		
648	COMMERCE BANK-COMMER	COMMERCE BANK-COMMERCIAL CARDS	332126	101618 AP	12/28/2022	2-133-5-00-201	12-37 PW CONF COSTS,SUPPLIES,T	337.50		
648	COMMERCE BANK-COMMER	COMMERCE BANK-COMMERCIAL CARDS	332126	101618 AP	12/28/2022	2-133-5-00-201	12-37 PW CONF COSTS,SUPPLIES,T	337.50		
648	COMMERCE BANK-COMMER	COMMERCE BANK-COMMERCIAL CARDS	332193	101667 AP	12/30/2022	2-133-5-00-201	12-54 PW:OFFICE SUPPLY, TVL	13.80		
648	COMMERCE BANK-COMMER	COMMERCE BANK-COMMERCIAL CARDS	332160	101634 AP	12/29/2022	2-133-5-00-207	2-22 MIDWEST MOBILE RADIO	395.00		
648	COMMERCE BANK-COMMER	COMMERCE BANK-COMMERCIAL CARDS	332160	101634 AP	12/29/2022	2-133-5-00-207	2-22 MIDWEST MOBILE RADIO	105.00		
648	COMMERCE BANK-COMMER	COMMERCE BANK-COMMERCIAL CARDS	332126	101618 AP	12/28/2022	2-133-5-00-209	12-37 PW CONF COSTS,SUPPLIES,T	85.00		
648	COMMERCE BANK-COMMER	COMMERCE BANK-COMMERCIAL CARDS	332126	101618 AP	12/28/2022	2-133-5-00-210	12-37 PW CONF COSTS,SUPPLIES,T	699.98		
648	COMMERCE BANK-COMMER	COMMERCE BANK-COMMERCIAL CARDS	332160	101634 AP	12/29/2022	2-133-5-00-210	12-27 PW MONTHLY SVC + T COLE	393.15		
648	COMMERCE BANK-COMMER	COMMERCE BANK-COMMERCIAL CARDS	332126	101618 AP	12/28/2022	2-133-5-00-211	12-48 AREVALO,WILLIAMS,EVANS,G	720.00		
648	COMMERCE BANK-COMMER	COMMERCE BANK-COMMERCIAL CARDS	332126	101618 AP	12/28/2022	2-133-5-00-214	12-37 PW CONF COSTS,SUPPLIES,T	225.36		
648	COMMERCE BANK-COMMER	COMMERCE BANK-COMMERCIAL CARDS	332160	101634 AP	12/29/2022	2-133-5-00-251	12-34 FREESTATE ELEC SVC SIRES	70.79		
648	COMMERCE BANK-COMMER	COMMERCE BANK-COMMERCIAL CARDS	332126	101618 AP	12/28/2022	2-133-5-00-301	12-37 PW CONF COSTS,SUPPLIES,T	225.74		
648	COMMERCE BANK-COMMER	COMMERCE BANK-COMMERCIAL CARDS	332193	101667 AP	12/30/2022	2-133-5-00-301	12-54 PW:OFFICE SUPPLY, TVL	1,036.69		
648	COMMERCE BANK-COMMER	COMMERCE BANK-COMMERCIAL CARDS	332193	101667 AP	12/30/2022	2-133-5-00-301	12-55 RETIREMENT CAKE - RZABEL	66.99		
648	COMMERCE BANK-COMMER	COMMERCE BANK-COMMERCIAL CARDS	332126	101618 AP	12/28/2022	2-133-5-00-309	12-48 AREVALO,WILLIAMS,EVANS,G	267.56		
648	COMMERCE BANK-COMMER	COMMERCE BANK-COMMERCIAL CARDS	332126	101618 AP	12/28/2022	2-133-5-00-309	12-48 AREVALO,WILLIAMS,EVANS,G	133.78		
648	COMMERCE BANK-COMMER	COMMERCE BANK-COMMERCIAL CARDS	332126	101618 AP	12/28/2022	2-133-5-00-311	12-48 AREVALO,WILLIAMS,EVANS,G	186.15		
648	COMMERCE BANK-COMMER	COMMERCE BANK-COMMERCIAL CARDS	332126	101618 AP	12/28/2022	2-133-5-00-360	12-48 AREVALO,WILLIAMS,EVANS,G	19.30		
648	COMMERCE BANK-COMMER	COMMERCE BANK-COMMERCIAL CARDS	332126	101618 AP	12/28/2022	2-133-5-00-360	12-48 AREVALO,WILLIAMS,EVANS,G	73.80		
648	COMMERCE BANK-COMMER	COMMERCE BANK-COMMERCIAL CARDS	332126	101618 AP	12/28/2022	2-133-5-00-364	12-48 AREVALO,WILLIAMS,EVANS,G	97.69		
							*** VENDOR		648 TOTAL	5,490.78
369	HOLLIDAY	HOLLIDAY SAND & GRAVEL CO	332197	101671 AP	12/30/2022	2-133-5-00-306	12-57 218331 SAND LESS CREDITS	3,700.99		
369	HOLLIDAY	HOLLIDAY SAND & GRAVEL CO	332197	101671 AP	12/30/2022	2-133-5-00-306	12-57 218331 SAND LESS CREDITS	5,032.55		
369	HOLLIDAY	HOLLIDAY SAND & GRAVEL CO	332197	101671 AP	12/30/2022	2-133-5-00-306	12-57 218331 SAND LESS CREDITS	1,710.01-		
369	HOLLIDAY	HOLLIDAY SAND & GRAVEL CO	332197	101671 AP	12/30/2022	2-133-5-00-306	12-57 218331 SAND LESS CREDITS	194.40-		
							*** VENDOR		369 TOTAL	6,829.13
461	LEAV CO CO	LEAV CO COOP	332203	101677 AP	12/30/2022	2-133-5-00-304	12-42 LEAROA TAK LEASE, CLEAR	18,971.23		
461	LEAV CO CO	LEAV CO COOP	332203	101677 AP	12/30/2022	2-133-5-00-304	12-42 LEAROA TAK LEASE, CLEAR	150.00		
461	LEAV CO CO	LEAV CO COOP	332203	101677 AP	12/30/2022	2-133-5-00-304	12-42 LEAROA TAK LEASE, CLEAR	150.00		
461	LEAV CO CO	LEAV CO COOP	332203	101677 AP	12/30/2022	2-133-5-00-304	12-35 LEAROA FUEL FLUIDS/LUBES	7,241.98		
461	LEAV CO CO	LEAV CO COOP	332203	101677 AP	12/30/2022	2-133-5-00-310	12-42 LEAROA TAK LEASE, CLEAR	508.75		
461	LEAV CO CO	LEAV CO COOP	332203	101677 AP	12/30/2022	2-133-5-00-310	12-35 LEAROA FUEL FLUIDS/LUBES	757.80		
461	LEAV CO CO	LEAV CO COOP	332203	101677 AP	12/30/2022	2-133-5-00-310	12-35 LEAROA FUEL FLUIDS/LUBES	1,784.48		
461	LEAV CO CO	LEAV CO COOP	332203	101677 AP	12/30/2022	2-133-5-00-310	12-35 LEAROA FUEL FLUIDS/LUBES	508.75		
							*** VENDOR		461 TOTAL	30,072.99

TYPES OF CHECKS SELECTED: * ALL TYPES

			P.O.NUMBER	CHECK#					
1780	LEXECO	LEXECO	332206	101680 AP	12/30/2022	2-133-5-00-361	12-53 PUBLIC WORKS ROCK TO 12.	96,734.82	
11799	O'REILLY A	O'REILLY AUTOMOTIVE	332210	101684 AP	12/30/2022	2-133-5-00-310	12-49 19615 WIPER BLADES/FLUID	53.88	
11799	O'REILLY A	O'REILLY AUTOMOTIVE	332210	101684 AP	12/30/2022	2-133-5-00-360	12-49 19615 WIPER BLADES/FLUID	239.80	
11799	O'REILLY A	O'REILLY AUTOMOTIVE	332210	101684 AP	12/30/2022	2-133-5-00-360	12-46 19615 CLAMPS,HOSES,CONNE	26.89	
11799	O'REILLY A	O'REILLY AUTOMOTIVE	332210	101684 AP	12/30/2022	2-133-5-00-360	12-46 19615 CLAMPS,HOSES,CONNE	26.89	
11799	O'REILLY A	O'REILLY AUTOMOTIVE	332210	101684 AP	12/30/2022	2-133-5-00-360	12-46 19615 CLAMPS,HOSES,CONNE	22.00	
11799	O'REILLY A	O'REILLY AUTOMOTIVE	332210	101684 AP	12/30/2022	2-133-5-00-360	12-46 19615 CLAMPS,HOSES,CONNE	33.44	
11799	O'REILLY A	O'REILLY AUTOMOTIVE	332210	101684 AP	12/30/2022	2-133-5-00-360	12-56 19615 BELT, PULLEY	55.58	
							*** VENDOR	11799 TOTAL	360.70
3	OTHER COUNTY OFFICE	BEVERLY S MILLS	332211	101685 AP	12/30/2022	2-133-5-00-301	12-52 ENGRAVEMENT FOR RETIREME	10.00	
7098	QUILL CORP	QUILL CORP	332214	101688 AP	12/30/2022	2-133-5-00-301	12-41 CAN LINERS 7295538	67.44	
575	US POSTAL SERVICE	US POSTAL SERVICE (QUADIENT-PO	332222	101696 AP	12/30/2022	2-133-5-00-301	12-16 NOVEMBER POSTAGE - PUB W	55.55	
							TOTAL FUND 133		205,567.33
648	COMMERCE BANK-COMMER	COMMERCE BANK-COMMERCIAL CARDS	332160	101634 AP	12/29/2022	2-136-5-00-203	IRON MOUNTAIN SHREDDING	3.75	
648	COMMERCE BANK-COMMER	COMMERCE BANK-COMMERCIAL CARDS	332126	101618 AP	12/28/2022	2-136-5-00-206	COMM CORR INTERNET,STAFF LUNCH	40.01	
648	COMMERCE BANK-COMMER	COMMERCE BANK-COMMERCIAL CARDS	332160	101634 AP	12/29/2022	2-136-5-00-206	FIRSTNET COMM CORR	82.75	
648	COMMERCE BANK-COMMER	COMMERCE BANK-COMMERCIAL CARDS	332193	101667 AP	12/30/2022	2-136-5-00-206	COMM CORR - VERIZON WIRELESS	20.01	
648	COMMERCE BANK-COMMER	COMMERCE BANK-COMMERCIAL CARDS	332160	101634 AP	12/29/2022	2-136-5-00-223	IRON MOUNTAIN SHREDDING	3.74	
648	COMMERCE BANK-COMMER	COMMERCE BANK-COMMERCIAL CARDS	332160	101634 AP	12/29/2022	2-136-5-00-226	FIRSTNET COMM CORR	82.76	
648	COMMERCE BANK-COMMER	COMMERCE BANK-COMMERCIAL CARDS	332193	101667 AP	12/30/2022	2-136-5-00-226	COMM CORR - VERIZON WIRELESS	20.00	
648	COMMERCE BANK-COMMER	COMMERCE BANK-COMMERCIAL CARDS	332160	101634 AP	12/29/2022	2-136-5-00-236	FIRSTNET COMM CORR	100.34	
648	COMMERCE BANK-COMMER	COMMERCE BANK-COMMERCIAL CARDS	332126	101618 AP	12/28/2022	2-136-5-00-238	COMM CORR INTERNET,STAFF LUNCH	41.13	
							*** VENDOR	648 TOTAL	394.49
1220	CULLIGAN OF GREATER	CULLIGAN OF GREATER KANSAS CIT	332161	101635 AP	12/29/2022	2-136-5-00-203	1274542 WATER/COOLER RENTAL	21.00	
1220	CULLIGAN OF GREATER	CULLIGAN OF GREATER KANSAS CIT	332161	101635 AP	12/29/2022	2-136-5-00-223	1274542 WATER/COOLER RENTAL	21.00	
							*** VENDOR	1220 TOTAL	42.00
7098	QUILL CORP	QUILL CORP	332214	101688 AP	12/30/2022	2-136-5-00-238	5645204 OFFICE SUPPLIES	21.99	
7098	QUILL CORP	QUILL CORP	332214	101688 AP	12/30/2022	2-136-5-00-321	5645204 OFFICE SUPPLIES	17.99	
							*** VENDOR	7098 TOTAL	39.98
113	SUMNERONE INC	SUMNERONE INC	332217	101691 AP	12/30/2022	2-136-5-00-223	50COL COPIER PARTS	37.92	
113	SUMNERONE INC	SUMNERONE INC	332217	101691 AP	12/30/2022	2-136-5-00-223	50ULC08 COPIER PARTS	55.02	
113	SUMNERONE INC	SUMNERONE INC	332217	101691 AP	12/30/2022	2-136-5-00-233	50COL COPIER PARTS	37.94	
113	SUMNERONE INC	SUMNERONE INC	332217	101691 AP	12/30/2022	2-136-5-00-233	50ULC08 COPIER PARTS	55.02	
113	SUMNERONE INC	SUMNERONE INC	332217	101691 AP	12/30/2022	2-136-5-00-301	50COL COPIER PARTS	37.92	
113	SUMNERONE INC	SUMNERONE INC	332217	101691 AP	12/30/2022	2-136-5-00-301	50ULC08 COPIER PARTS	55.02	
							*** VENDOR	113 TOTAL	278.84
575	US POSTAL SERVICE	US POSTAL SERVICE (QUADIENT-PO	332222	101696 AP	12/30/2022	2-136-5-00-301	JUV COMM CORR NOVEMBER POSTAGE	11.41	
575	US POSTAL SERVICE	US POSTAL SERVICE (QUADIENT-PO	332222	101696 AP	12/30/2022	2-136-5-00-321	JUV COMM CORR NOVEMBER POSTAGE	11.42	
							*** VENDOR	575 TOTAL	22.83
276	WEX	WEX BANK	332225	46	12/30/2022	2-136-5-00-221	COMM CORR FUEL TO 12.23.22	16.29	
276	WEX	WEX BANK	332225	46	12/30/2022	2-136-5-00-234	COMM CORR FUEL TO 12.23.22	59.83	
							*** VENDOR	276 TOTAL	76.12
							TOTAL FUND 136		854.26
4120	ACE IMAGEWEAR	AAA LAUNDRY & LINEN SUPPLY CO	332183	101656 AP	12/30/2022	2-137-5-00-203	12-15 4013-01993 UNIFORMS	103.65	
648	COMMERCE BANK-COMMER	COMMERCE BANK-COMMERCIAL CARDS	332126	101618 AP	12/28/2022	2-137-5-00-320	12-14 AIR FILTER (AREVALO)	40.25	
461	LEAV CO CO	LEAV CO COOP	332203	101677 AP	12/30/2022	2-137-5-00-304	12-13 LEAROA DYED DIESEL	3,538.63	
461	LEAV CO CO	LEAV CO COOP	332203	101677 AP	12/30/2022	2-137-5-00-304	12-13 LEAROA DYED DIESEL	1,045.44	
461	LEAV CO CO	LEAV CO COOP	332203	101677 AP	12/30/2022	2-137-5-00-304	12-11 LEAROA DYED DIESEL	983.76	
461	LEAV CO CO	LEAV CO COOP	332203	101677 AP	12/30/2022	2-137-5-00-304	12-11 LEAROA DYED DIESEL	2,214.79	
							*** VENDOR	461 TOTAL	7,782.62

TYPES OF CHECKS SELECTED: * ALL TYPES

		P.O.NUMBER	CHECK#					TOTAL FUND 137	7,926.52	
648	COMMERCE BANK-COMMER	COMMERCE BANK-COMMERCIAL CARDS	332160	101634 AP	12/29/2022	2-138-5-00-203	IRON MOUNTAIN SHREDDING	7.49		
648	COMMERCE BANK-COMMER	COMMERCE BANK-COMMERCIAL CARDS	332160	101634 AP	12/29/2022	2-138-5-00-206	FIRSTNET COMM CORR	57.67		
								*** VENDOR	648 TOTAL	65.16
7098	QUILL CORP	QUILL CORP	332214	101688 AP	12/30/2022	2-138-5-00-301	5645204 OFFICE SUPPLIES	70.77		
7098	QUILL CORP	QUILL CORP	332214	101688 AP	12/30/2022	2-138-5-00-301	5645204 OFFICE SUPPLIES	21.99		
								*** VENDOR	7098 TOTAL	92.76
								TOTAL FUND 138		157.92
648	COMMERCE BANK-COMMER	COMMERCE BANK-COMMERCIAL CARDS	332126	101618 AP	12/28/2022	2-144-5-00-2	COA DECEMBER STMTS	616.85		
648	COMMERCE BANK-COMMER	COMMERCE BANK-COMMERCIAL CARDS	332126	101618 AP	12/28/2022	2-144-5-00-2	COA DECEMBER STMTS	37.75		
648	COMMERCE BANK-COMMER	COMMERCE BANK-COMMERCIAL CARDS	332126	101618 AP	12/28/2022	2-144-5-00-2	COA DECEMBER STMTS	91.80		
648	COMMERCE BANK-COMMER	COMMERCE BANK-COMMERCIAL CARDS	332193	101667 AP	12/30/2022	2-144-5-00-2	COA:DAWN:OFFICE SUPPLY, PALS	173.61		
648	COMMERCE BANK-COMMER	COMMERCE BANK-COMMERCIAL CARDS	332193	101667 AP	12/30/2022	2-144-5-00-2	COA:DAWN:OFFICE SUPPLY, PALS	57.00		
648	COMMERCE BANK-COMMER	COMMERCE BANK-COMMERCIAL CARDS	332193	101667 AP	12/30/2022	2-144-5-00-2	COA DECEMBER ACTIVITY	178.00		
648	COMMERCE BANK-COMMER	COMMERCE BANK-COMMERCIAL CARDS	332126	101618 AP	12/28/2022	2-144-5-00-3	COA DECEMBER STMTS	67.31		
648	COMMERCE BANK-COMMER	COMMERCE BANK-COMMERCIAL CARDS	332126	101618 AP	12/28/2022	2-144-5-00-3	COA DECEMBER STMTS	52.66		
648	COMMERCE BANK-COMMER	COMMERCE BANK-COMMERCIAL CARDS	332126	101618 AP	12/28/2022	2-144-5-00-3	COA DECEMBER STMTS	277.83		
648	COMMERCE BANK-COMMER	COMMERCE BANK-COMMERCIAL CARDS	332193	101667 AP	12/30/2022	2-144-5-00-3	COA PALS:MARLA, COMMODITIES	421.92		
648	COMMERCE BANK-COMMER	COMMERCE BANK-COMMERCIAL CARDS	332193	101667 AP	12/30/2022	2-144-5-00-3	COA PALS:MARLA, COMMODITIES	138.76		
648	COMMERCE BANK-COMMER	COMMERCE BANK-COMMERCIAL CARDS	332193	101667 AP	12/30/2022	2-144-5-00-3	COA PALS:MARLA, COMMODITIES	247.67		
648	COMMERCE BANK-COMMER	COMMERCE BANK-COMMERCIAL CARDS	332193	101667 AP	12/30/2022	2-144-5-00-3	COA:DAWN:OFFICE SUPPLY, PALS	65.62		
648	COMMERCE BANK-COMMER	COMMERCE BANK-COMMERCIAL CARDS	332193	101667 AP	12/30/2022	2-144-5-00-3	COA:DAWN:OFFICE SUPPLY, PALS	32.98		
648	COMMERCE BANK-COMMER	COMMERCE BANK-COMMERCIAL CARDS	332193	101667 AP	12/30/2022	2-144-5-00-3	COA:DAWN:OFFICE SUPPLY, PALS	178.45		
								*** VENDOR	648 TOTAL	2,638.21
19474	KANSAS COUNTRY STORE	KANSAS COUNTRY STORE	332167	101641 AP	12/29/2022	2-144-5-00-3	PET FOOD/SUPPLIES	747.00		
19474	KANSAS COUNTRY STORE	KANSAS COUNTRY STORE	332167	101641 AP	12/29/2022	2-144-5-00-3	PET FOOD/SUPPLIES	15.99		
19474	KANSAS COUNTRY STORE	KANSAS COUNTRY STORE	332167	101641 AP	12/29/2022	2-144-5-00-3	PET FOOD/SUPPLIES	86.49		
19474	KANSAS COUNTRY STORE	KANSAS COUNTRY STORE	332167	101641 AP	12/29/2022	2-144-5-00-3	PET FOOD/SUPPLIES	169.90-		
								*** VENDOR	19474 TOTAL	679.58
								TOTAL FUND 144		3,317.79
562	ACCESSIBLE SOLUTIONS	ACCESSIBLE SOLUTIONS INC	332117	101610 AP	12/26/2022	2-145-5-00-208	COA DECEMBER SOFTWARE LICENSES	635.00		
648	COMMERCE BANK-COMMER	COMMERCE BANK-COMMERCIAL CARDS	332126	101618 AP	12/28/2022	2-145-5-00-203	COA DECEMBER STMTS	60.00		
648	COMMERCE BANK-COMMER	COMMERCE BANK-COMMERCIAL CARDS	332193	101667 AP	12/30/2022	2-145-5-00-203	COA:ROSS:BACKGROUND CHECK	20.00		
648	COMMERCE BANK-COMMER	COMMERCE BANK-COMMERCIAL CARDS	332126	101618 AP	12/28/2022	2-145-5-00-208	COA DECEMBER STMTS	158.90		
648	COMMERCE BANK-COMMER	COMMERCE BANK-COMMERCIAL CARDS	332160	101634 AP	12/29/2022	2-145-5-00-208	IRON MOUNTAIN SHREDDING	29.96		
648	COMMERCE BANK-COMMER	COMMERCE BANK-COMMERCIAL CARDS	332160	101634 AP	12/29/2022	2-145-5-00-208	IRON MOUNTAIN SHREDDING	661.11		
648	COMMERCE BANK-COMMER	COMMERCE BANK-COMMERCIAL CARDS	332126	101618 AP	12/28/2022	2-145-5-00-212	COA DECEMBER STMTS	502.26		
648	COMMERCE BANK-COMMER	COMMERCE BANK-COMMERCIAL CARDS	332126	101618 AP	12/28/2022	2-145-5-00-213	COA DECEMBER STMTS	249.99		
648	COMMERCE BANK-COMMER	COMMERCE BANK-COMMERCIAL CARDS	332126	101618 AP	12/28/2022	2-145-5-00-213	COA DECEMBER STMTS	34.96		
648	COMMERCE BANK-COMMER	COMMERCE BANK-COMMERCIAL CARDS	332193	101667 AP	12/30/2022	2-145-5-00-213	COA DECEMBER ACTIVITY	279.96		
648	COMMERCE BANK-COMMER	COMMERCE BANK-COMMERCIAL CARDS	332193	101667 AP	12/30/2022	2-145-5-00-213	COA DECEMBER ACTIVITY	376.80		
648	COMMERCE BANK-COMMER	COMMERCE BANK-COMMERCIAL CARDS	332126	101618 AP	12/28/2022	2-145-5-00-252	COA DECEMBER STMTS	63.95		
648	COMMERCE BANK-COMMER	COMMERCE BANK-COMMERCIAL CARDS	332126	101618 AP	12/28/2022	2-145-5-00-252	COA DECEMBER STMTS	7.99		
648	COMMERCE BANK-COMMER	COMMERCE BANK-COMMERCIAL CARDS	332126	101618 AP	12/28/2022	2-145-5-00-252	COA DECEMBER STMTS	26.38		
648	COMMERCE BANK-COMMER	COMMERCE BANK-COMMERCIAL CARDS	332126	101618 AP	12/28/2022	2-145-5-00-252	COA DECEMBER STMTS	16.29		
648	COMMERCE BANK-COMMER	COMMERCE BANK-COMMERCIAL CARDS	332193	101667 AP	12/30/2022	2-145-5-00-252	COA CAMALLA: MEETINGS	15.94		
648	COMMERCE BANK-COMMER	COMMERCE BANK-COMMERCIAL CARDS	332126	101618 AP	12/28/2022	2-145-5-00-254	COA DECEMBER STMTS	31.43		
648	COMMERCE BANK-COMMER	COMMERCE BANK-COMMERCIAL CARDS	332126	101618 AP	12/28/2022	2-145-5-00-301	COA DECEMBER STMTS	1,116.40		
648	COMMERCE BANK-COMMER	COMMERCE BANK-COMMERCIAL CARDS	332126	101618 AP	12/28/2022	2-145-5-00-301	COA DECEMBER STMTS	19.97		

TYPES OF CHECKS SELECTED: * ALL TYPES

			P.O. NUMBER	CHECK#						
648	COMMERCE BANK-COMMER	COMMERCE BANK-COMMERCIAL CARDS	332193	101667 AP	12/30/2022	2-145-5-00-301	COA:DAWN:OFFICE SUPPLY, PALS		47.32	
648	COMMERCE BANK-COMMER	COMMERCE BANK-COMMERCIAL CARDS	332193	101667 AP	12/30/2022	2-145-5-00-301	COA:HARMON:BATTERIES, LIGHTS		15.99	
648	COMMERCE BANK-COMMER	COMMERCE BANK-COMMERCIAL CARDS	332193	101667 AP	12/30/2022	2-145-5-00-301	COA:HARMON:BATTERIES, LIGHTS		15.61	
648	COMMERCE BANK-COMMER	COMMERCE BANK-COMMERCIAL CARDS	332126	101618 AP	12/28/2022	2-145-5-00-750	COA DECEMBER STMTS		72.04	
648	COMMERCE BANK-COMMER	COMMERCE BANK-COMMERCIAL CARDS	332126	101618 AP	12/28/2022	2-145-5-00-750	COA DECEMBER STMTS		275.78	
648	COMMERCE BANK-COMMER	COMMERCE BANK-COMMERCIAL CARDS	332193	101667 AP	12/30/2022	2-145-5-00-750	COA:KIEFER: LEISURE & LEARNING		6.36	
648	COMMERCE BANK-COMMER	COMMERCE BANK-COMMERCIAL CARDS	332193	101667 AP	12/30/2022	2-145-5-00-750	COA DECEMBER ACTIVITY		301.27	
648	COMMERCE BANK-COMMER	COMMERCE BANK-COMMERCIAL CARDS	332193	101667 AP	12/30/2022	2-145-5-00-750	COA DECEMBER ACTIVITY		135.95	
							*** VENDOR	648 TOTAL		4,542.61
4755	LEAV PAPER	LEAVENWORTH PAPER AND OFFICE S	332204	101678 AP	12/30/2022	2-145-5-00-305	COA CHAIR CART		600.00	
4755	LEAV PAPER	LEAVENWORTH PAPER AND OFFICE S	332204	101678 AP	12/30/2022	2-145-5-00-345	COA PKGING & SITE SUPPLIES C1&		74.37	
4755	LEAV PAPER	LEAVENWORTH PAPER AND OFFICE S	332204	101678 AP	12/30/2022	2-145-5-00-345	COA PKGING & SITE SUPPLIES C1&		208.49	
4755	LEAV PAPER	LEAVENWORTH PAPER AND OFFICE S	332204	101678 AP	12/30/2022	2-145-5-00-345	COA C1&C2 PKG/SITE SUPPLIES		40.50	
4755	LEAV PAPER	LEAVENWORTH PAPER AND OFFICE S	332204	101678 AP	12/30/2022	2-145-5-00-345	COA C1&C2 PKG/SITE SUPPLIES		113.54	
4755	LEAV PAPER	LEAVENWORTH PAPER AND OFFICE S	332204	101678 AP	12/30/2022	2-145-5-05-301	COA PKGING & SITE SUPPLIES C1&		32.19	
4755	LEAV PAPER	LEAVENWORTH PAPER AND OFFICE S	332204	101678 AP	12/30/2022	2-145-5-05-301	COA C1&C2 PKG/SITE SUPPLIES		17.53	
4755	LEAV PAPER	LEAVENWORTH PAPER AND OFFICE S	332204	101678 AP	12/30/2022	2-145-5-06-301	COA PKGING & SITE SUPPLIES C1&		47.39	
4755	LEAV PAPER	LEAVENWORTH PAPER AND OFFICE S	332204	101678 AP	12/30/2022	2-145-5-06-301	COA C1&C2 PKG/SITE SUPPLIES		25.80	
4755	LEAV PAPER	LEAVENWORTH PAPER AND OFFICE S	332204	101678 AP	12/30/2022	2-145-5-06-321	COA PKGING & SITE SUPPLIES C1&		31.59	
4755	LEAV PAPER	LEAVENWORTH PAPER AND OFFICE S	332204	101678 AP	12/30/2022	2-145-5-06-321	COA C1&C2 PKG/SITE SUPPLIES		17.20	
4755	LEAV PAPER	LEAVENWORTH PAPER AND OFFICE S	332204	101678 AP	12/30/2022	2-145-5-07-302	COA PKGING & SITE SUPPLIES C1&		4.44	
4755	LEAV PAPER	LEAVENWORTH PAPER AND OFFICE S	332204	101678 AP	12/30/2022	2-145-5-07-302	COA C1&C2 PKG/SITE SUPPLIES		2.42	
4755	LEAV PAPER	LEAVENWORTH PAPER AND OFFICE S	332204	101678 AP	12/30/2022	2-145-5-07-321	COA PKGING & SITE SUPPLIES C1&		28.43	
4755	LEAV PAPER	LEAVENWORTH PAPER AND OFFICE S	332204	101678 AP	12/30/2022	2-145-5-07-321	COA C1&C2 PKG/SITE SUPPLIES		15.48	
							*** VENDOR	4755 TOTAL		1,259.37
2059	MIDWEST OFFICE TECH	MIDWEST OFFICE TECHNOLOGY INC	332209	101683 AP	12/30/2022	2-145-5-00-208	OPK596_K B/W COPIER TO 12/14/2		32.49	
2059	MIDWEST OFFICE TECH	MIDWEST OFFICE TECHNOLOGY INC	332209	101683 AP	12/30/2022	2-145-5-00-208	COA(OPK596_K)-COLOR COPIER CON		282.51	
							*** VENDOR	2059 TOTAL		315.00
22972	TRANSFER STATION	TRANSFER STATION	332219	101693 AP	12/30/2022	2-145-5-00-204	COA CCT 220 WASTE		30.00	
22972	TRANSFER STATION	TRANSFER STATION	332219	101693 AP	12/30/2022	2-145-5-00-204	COA CCT 220 WASTE		11.00	
							*** VENDOR	22972 TOTAL		41.00
575	US POSTAL SERVICE	US POSTAL SERVICE (QUADIENT-PO	332222	101696 AP	12/30/2022	2-145-5-00-302	COA NOVEMBER POSTAGE		160.65	
2	WATER DEPT	WATER DEPT	332223	101697 AP	12/30/2022	2-145-5-00-246	WATER SVC 1830 S BROADWAY		111.64	
276	WEX	WEX BANK	332225	46	12/30/2022	2-145-5-00-304	COA FUEL TO 12.23.22		3,730.33	
							TOTAL FUND 145			10,795.60
648	COMMERCE BANK-COMMER	COMMERCE BANK-COMMERCIAL CARDS	332160	101634 AP	12/29/2022	2-146-5-00-218	IRON MOUNTAIN SHREDDING		46.71	
648	COMMERCE BANK-COMMER	COMMERCE BANK-COMMERCIAL CARDS	332126	101618 AP	12/28/2022	2-146-5-00-301	CO TREAS		421.71	
648	COMMERCE BANK-COMMER	COMMERCE BANK-COMMERCIAL CARDS	332126	101618 AP	12/28/2022	2-146-5-00-301	CO TREAS		626.87	
648	COMMERCE BANK-COMMER	COMMERCE BANK-COMMERCIAL CARDS	332126	101618 AP	12/28/2022	2-146-5-00-301	CO TREAS		416.33	
648	COMMERCE BANK-COMMER	COMMERCE BANK-COMMERCIAL CARDS	332126	101618 AP	12/28/2022	2-146-5-00-301	CO TREAS		26.71-	
648	COMMERCE BANK-COMMER	COMMERCE BANK-COMMERCIAL CARDS	332193	101667 AP	12/30/2022	2-146-5-00-301	TAVANO:ENVELOPES		70.00	
							*** VENDOR	648 TOTAL		1,554.91
575	US POSTAL SERVICE	US POSTAL SERVICE (QUADIENT-PO	332222	101696 AP	12/30/2022	2-146-5-00-302	CO TREAS CTS (MV) NOVEMBER POS		1,302.88	
							TOTAL FUND 146			2,857.79
648	COMMERCE BANK-COMMER	COMMERCE BANK-COMMERCIAL CARDS	332193	101667 AP	12/30/2022	2-147-5-00-3	COA DECEMBER ACTIVITY		3,536.85	
							TOTAL FUND 147			3,536.85
648	COMMERCE BANK-COMMER	COMMERCE BANK-COMMERCIAL CARDS	332126	101618 AP	12/28/2022	2-160-5-00-201	SOLID WASTE:EQUIP MAINT, ADMIN		286.82	
648	COMMERCE BANK-COMMER	COMMERCE BANK-COMMERCIAL CARDS	332126	101618 AP	12/28/2022	2-160-5-00-201	SOLID WASTE:EDUCATION,ADMIN/OF		201.50	
648	COMMERCE BANK-COMMER	COMMERCE BANK-COMMERCIAL CARDS	332193	101667 AP	12/30/2022	2-160-5-00-201	TRANSFER STATION - SALES TAX C		24.82-	

START DATE: 12/24/2022 END DATE: 12/30/2022

TYPES OF CHECKS SELECTED: * ALL TYPES

		P.O.NUMBER	CHECK#								
648	COMMERCE BANK-COMMER	COMMERCE BANK-COMMERCIAL CARDS	332126	101618 AP	12/28/2022	2-160-5-00-202	SOLID WASTE:EDUCATION,ADMIN/OF		1,658.90		
648	COMMERCE BANK-COMMER	COMMERCE BANK-COMMERCIAL CARDS	332193	101667 AP	12/30/2022	2-160-5-00-204	HAMM - DEC LANDFILL/FUEL CHGS (62,921.25		
648	COMMERCE BANK-COMMER	COMMERCE BANK-COMMERCIAL CARDS	332193	101667 AP	12/30/2022	2-160-5-00-204	HAMM - DEC LANDFILL/FUEL CHGS (2,469.98		
648	COMMERCE BANK-COMMER	COMMERCE BANK-COMMERCIAL CARDS	332193	101667 AP	12/30/2022	2-160-5-00-208	TRANSFER STATION - SHARPS RECO		327.97		
648	COMMERCE BANK-COMMER	COMMERCE BANK-COMMERCIAL CARDS	332126	101618 AP	12/28/2022	2-160-5-00-213	SOLID WASTE:EQUIP MAINT, ADMIN		319.57		
648	COMMERCE BANK-COMMER	COMMERCE BANK-COMMERCIAL CARDS	332126	101618 AP	12/28/2022	2-160-5-00-213	SOLID WASTE:EDUCATION,ADMIN/OF		389.71		
648	COMMERCE BANK-COMMER	COMMERCE BANK-COMMERCIAL CARDS	332126	101618 AP	12/28/2022	2-160-5-00-301	SOLID WASTE:EDUCATION,ADMIN/OF		497.37		
									*** VENDOR	648 TOTAL	69,048.25
86	EVERGY	EVERGY KANSAS CENTRAL INC	332162	101636 AP	12/29/2022	2-160-5-00-210	ELEC SVC TRANSFER STATION		560.13		
86	EVERGY	EVERGY KANSAS CENTRAL INC	332162	101636 AP	12/29/2022	2-160-5-00-210	ELEC SVC TRANSFER STATION		113.06		
86	EVERGY	EVERGY KANSAS CENTRAL INC	332162	101636 AP	12/29/2022	2-160-5-00-210	ELEC SVC TRANSFER STATION		517.66		
									*** VENDOR	86 TOTAL	1,190.85
461	LEAV CO CO	LEAV CO COOP	332203	101677 AP	12/30/2022	2-160-5-00-304	LEASOL DIESEL FUEL		964.02		
458	ROAD & BRIDGE	LEAV CO PUBLIC WORKS	332215	101689 AP	12/30/2022	2-160-5-00-213	TRANSFER STATION - MAINTENANCE		38.00		
458	ROAD & BRIDGE	LEAV CO PUBLIC WORKS	332215	101689 AP	12/30/2022	2-160-5-00-213	TRANSFER STATION - MAINTENANCE		19.00		
									*** VENDOR	458 TOTAL	57.00
6917	RWD 1	RURAL WATER DIST #1	332216	101690 AP	12/30/2022	2-160-5-00-210	WATER METER - TRANSFER STATION		22.13		
10703	TIRE TOWN	TIRE TOWN	332218	101692 AP	12/30/2022	2-160-5-00-207	SCRAP TIRES		500.00		
575	US POSTAL SERVICE	US POSTAL SERVICE (QUADIENT-PO	332222	101696 AP	12/30/2022	2-160-5-00-201	TRANSFER STATION NOV POSTAGE		31.35		
									TOTAL FUND 160	71,813.60	

654	SMITH TRUST	THE SMITH TRUST	332107	1679 AP	12/24/2022	2-171-5-04-301	12-6	APPEAL SETTLEMENT CR30 E	8,000.00		
									TOTAL FUND 171	8,000.00	

1737	AT&T-CAROL STREAM IL	AT&T	332157	101630 AP	12/29/2022	2-174-5-00-210	913A38-0682 421 2 PHONE SVC 4		79.52		
1737	AT&T-CAROL STREAM IL	AT&T	332157	101630 AP	12/29/2022	2-174-5-00-210	913A38-0682 421 2 PHONE SVC 4		79.52		
1737	AT&T-CAROL STREAM IL	AT&T	332157	101630 AP	12/29/2022	2-174-5-00-210	913A38-0682 421 2 PHONE SVC 4		79.52		
1737	AT&T-CAROL STREAM IL	AT&T	332157	101630 AP	12/29/2022	2-174-5-00-210	913A38-0682 421 2 PHONE SVC 4		159.03		
									*** VENDOR	1737 TOTAL	397.59
648	COMMERCE BANK-COMMER	COMMERCE BANK-COMMERCIAL CARDS	332160	101634 AP	12/29/2022	2-174-5-00-210	12-34 FREESTATE ELEC SVC SIRES		841.26		
									TOTAL FUND 174	1,238.85	

2	WATER DEPT	WATER DEPT	332135	101627 AP	12/28/2022	2-195-5-00-290	WATER SVC 520 S 2ND ST		48.52		
									TOTAL FUND 195	48.52	

1867	REDWOOD TOXICOLOGY	REDWOOD TOXICOLOGY LABORATORY	332171	101645 AP	12/29/2022	2-196-5-00-201	112368 CONFIRMATION TESTS (CSO		131.67		
									TOTAL FUND 196	131.67	

648	COMMERCE BANK-COMMER	COMMERCE BANK-COMMERCIAL CARDS	332126	101618 AP	12/28/2022	2-198-5-05-201	EMS:FIELD &MAINT SUPPLY,UNIFOR		266.62		
648	COMMERCE BANK-COMMER	COMMERCE BANK-COMMERCIAL CARDS	332126	101618 AP	12/28/2022	2-198-5-18-301	EMPG (EOC) AMATEUR RADIO REPL		299.95		
648	COMMERCE BANK-COMMER	COMMERCE BANK-COMMERCIAL CARDS	332126	101618 AP	12/28/2022	2-198-5-18-301	EMPG (EOC) AMATEUR RADIO REPL		40.00-		
									*** VENDOR	648 TOTAL	526.57
									TOTAL FUND 198	526.57	

648	COMMERCE BANK-COMMER	COMMERCE BANK-COMMERCIAL CARDS	332126	101618 AP	12/28/2022	2-210-5-00-3	SEWER DISTRICTS:HACH COMPANY (44.04		
									TOTAL FUND 210	44.04	

648	COMMERCE BANK-COMMER	COMMERCE BANK-COMMERCIAL CARDS	332126	101618 AP	12/28/2022	2-212-5-00-3	SEWER DISTRICTS:HACH COMPANY (44.04		
									TOTAL FUND 212	44.04	

648	COMMERCE BANK-COMMER	COMMERCE BANK-COMMERCIAL CARDS	332126	101618 AP	12/28/2022	2-218-5-00-3	SEWER DISTRICTS:HACH COMPANY (44.04		
									TOTAL FUND 218	44.04	

TYPES OF CHECKS SELECTED: * ALL TYPES

		P.O.NUMBER	CHECK#								
2570	BOND ESCROW REFUND	VICKIE ANGELL	332187	101660 AP	12/30/2022	2-503-5-00-2	12-5 REF ENTRANCE PERMIT HOLLI	100.00			
								TOTAL FUND 503		100.00	
353	UNITED WAY	UNITED WAY OF LEAVENWORTH COUN	332221	101695 AP	12/30/2022	2-510-2-00-905	EMPLOYEE CONTRIBUTIONS	29.00			
353	UNITED WAY	UNITED WAY OF LEAVENWORTH COUN	332221	101695 AP	12/30/2022	2-510-2-00-905	EMPLOYEE CONTRIBUTIONS	29.00			
								*** VENDOR	353 TOTAL		58.00
								TOTAL FUND 510		58.00	
										TOTAL ALL CHECKS	591,706.52

TYPES OF CHECKS SELECTED: * ALL TYPES

FUND SUMMARY

001	GENERAL	263,248.69
108	COUNTY HEALTH	6,285.11
117	CO CLERK TECHNOLOGY	540.23
119	ROD TECHNOLOGY	3,050.00
123	JUVENILE CRIME PREVENTION	226.00
126	COMM CORR ADULT	951.66
127	COMM CORR ADULT NON GRANT	341.44
133	ROAD & BRIDGE	205,567.33
136	COMM CORR JUVENILE	854.26
137	LOCAL SERVICE ROAD & BRIDGE	7,926.52
138	JUV INTAKE & ASSESSMENT	157.92
144	PALS (PETS AND LOVING SENIORS	3,317.79
145	COUNCIL ON AGING	10,795.60
146	COUNTY TREASURER SPECIAL	2,857.79
147	MEMORIALS (COA)	3,536.85
160	SOLID WASTE MANAGEMENT	71,813.60
171	S TAX CAP RD PROJ: BONDS	8,000.00
174	911	1,238.85
195	JUVENILE DETENTION	48.52
196	DRUG TEST & SUPERVISION FEES	131.67
198	SPECIAL GRANTS	526.57
210	SEWER DISTRICT 1: HIGH CREST	44.04
212	SEWER DISTRICT 2: TIMBERLAKES	44.04
218	SEWER DIST #5	44.04
503	ROAD & BRIDGE BOND ESCROW	100.00
510	PAYROLL CLEARING	58.00
	TOTAL ALL FUNDS	591,706.52

Consent Agenda 1/4/2022
Checks dated 12/24-12/30

**Leavenworth County
Request for Board Action
Resolution 2023-1
Rezone from RR5 to RR2.5**

Date: January 4, 2023
To: Board of County Commissioners
From: Planning & Zoning Staff

Department Head Review: Krystal Voth, Reviewed

Additional Reviews as needed:

Budget Review **Administrator Review** **Legal Review**

Action Requested: Consider a request to rezone a tract of land located at 19266 Leavenworth Road from Rural Residential 5 to Rural Residential 2.5.

Analysis: The proposed rezoning is supported by Staff as the request is less dense than the future land use map indicates and per direction from the BOCC these requests are supported.

Planning Commission Recommendation: The Planning Commission voted 7-0 (2 absent) to recommend approval of Case No. DEV-22-146 (Resolution 2023-1) request for a rezoning from RR 5 to RR 2.5 zoning district.

Alternatives:

1. Approve Resolution 2023-1, Rezoning request from RR-5 to RR-2.5 with Findings of Fact, and with or without conditions; or
2. Deny Resolution 2023-1, Rezoning request from RR-5 to RR-2.5, with Findings of Fact; or
3. Revise or Modify the Planning Commission Recommendation to Resolution 2023-1 Rezoning request from RR-5 to RR-2.5, with Findings of Fact; or
4. Continue the Public hearing to another date, time, and place; or
5. Remand the case back to the Planning Commission.

Budgetary Impact:

- Not Applicable
- Budgeted item with available funds
- Non-Budgeted item with available funds through prioritization
- Non-Budgeted item with additional funds requested

Total Amount Requested:
\$0.00

Additional Attachments: Staff Report

**LEAVENWORTH COUNTY
BOARD OF COUNTY COMMISSIONER
STAFF REPORT**

CASE NO: DEV-22-146 – Cooper Rezone

January 4, 2023

REQUEST: *Public Hearing Required*

- ZONING AMENDMENT SPECIAL USE PERMIT
 TEMPORARY SPECIAL USE PERMIT

STAFF REPRESENTATIVE:

KRYSTAL A VOTH
DIRECTOR

SUBJECT PROPERTY: 19266 Leavenworth Road

APPLICANT/APPLICANT AGENT:

JOE HERRING
HERRING SURVEYING COMPANY
315 N. 5TH STREET
LEAVENWORTH, KS 66048

PROPERTY OWNER:

CHARLES E. COOPER

CONCURRENT APPLICATIONS:

N/A

LAND USE

ZONING: RR-5

FUTURE LAND USE DESIGNATION:
RESIDENTIAL 3 UNITS/ACRE

LEGAL DESCRIPTION:

A tract of land in the South ½ of the Southwest ¼ of Section 25, Township 10 South, Range 21 East of the 6th P.M. in Leavenworth County, Kansas.

SUBDIVISION: N/A

FLOODPLAIN: N/A

PLANNING COMMISSION RECOMMENDATION: APPROVAL (7-0)

PROPERTY INFORMATION

ACTION OPTIONS:

1. Recommend approval of Case No. DEV-22-146, Rezone from RR-5 to RR-2.5, to the Board of County Commission, with or without conditions; or
2. Recommend denial of Case No. DEV-22-146, Rezone from RR-5 to RR-2.5, to the Board of County Commission for the following reasons; or
3. Continue the hearing to another date, time, and place.

PARCEL SIZE: 2.51 ACRES

PARCEL ID NO:
146-23-0-00-00-009.00

BUILDINGS:
NONE

PROJECT SUMMARY:

Request to rezone a 13.4-acre tract of land from parcel 147-25-0-00-00-010.04 (more commonly known as 19266 Leavenworth Road)

ACCESS/STREET:

LEAVENWORTH ROAD

LOCATION MAP:



UTILITIES

SEWER: SEPTIC

FIRE: STRANGER

WATER: RWD 9

ELECTRIC: FREESTATE

NOTICE & REVIEW:

STAFF REVIEW: N/A

NEWSPAPER NOTIFICATION:
11/23/2022

NOTICE TO SURROUNDING
PROPERTY OWNERS:
11/23/2022

FACTORS TO BE CONSIDERED:		
<i>The following factors are to be considered by the Planning Commission and the Board of County Commissioners when approving or disapproving this Rezoning request:</i>	Met	Not Met
1. Character of the Neighborhood: <i>Density: The surrounding properties range in size from 1.7 acres to over 40 acres.</i> <i>Nearby City Limits: The properties are not near an incorporated city.</i> <i>Initial Growth Management Area: This parcel is located within the rural growth area.</i>	✓	
2. Zoning and uses of nearby property: <i>Adjacent Uses: Most of the adjacent parcels are residential and agricultural in nature.</i> <i>Adjacent Zoning: While the majority of properties are zoned RR-5, there are three properties located within ¼ mile that are zoned RR-2.5</i>	✓	
3. Suitability of the Property for the uses to which is has been restricted: The property is suitable for rural residences.	✓	
4. Extent to which removal of the restrictions will detrimentally affect nearby property: <i>Nearby properties are not likely to be detrimentally impacted.</i>	✓	
5. Length of time the property has been vacant as zoned: <i>Vacant:</i> <i>Not Vacant: ✓</i>	✓	
6. Relative gain to economic development, public health, safety and welfare: The proposed rezoning is not likely to impact economic development, public health, safety or welfare.	✓	
7. Conformance to the Comprehensive Plan: <i>Future Land Use Map: 3 Units/acre- the requested use is less dense than the future land use map currently shows.</i>	✓	

STAFF COMMENTS:

The proposed rezoning is supported by Staff as the request is less dense than the future land use map indicates and per direction from the BOCC these requests are supported.

FUTURE LAND USE MAP:

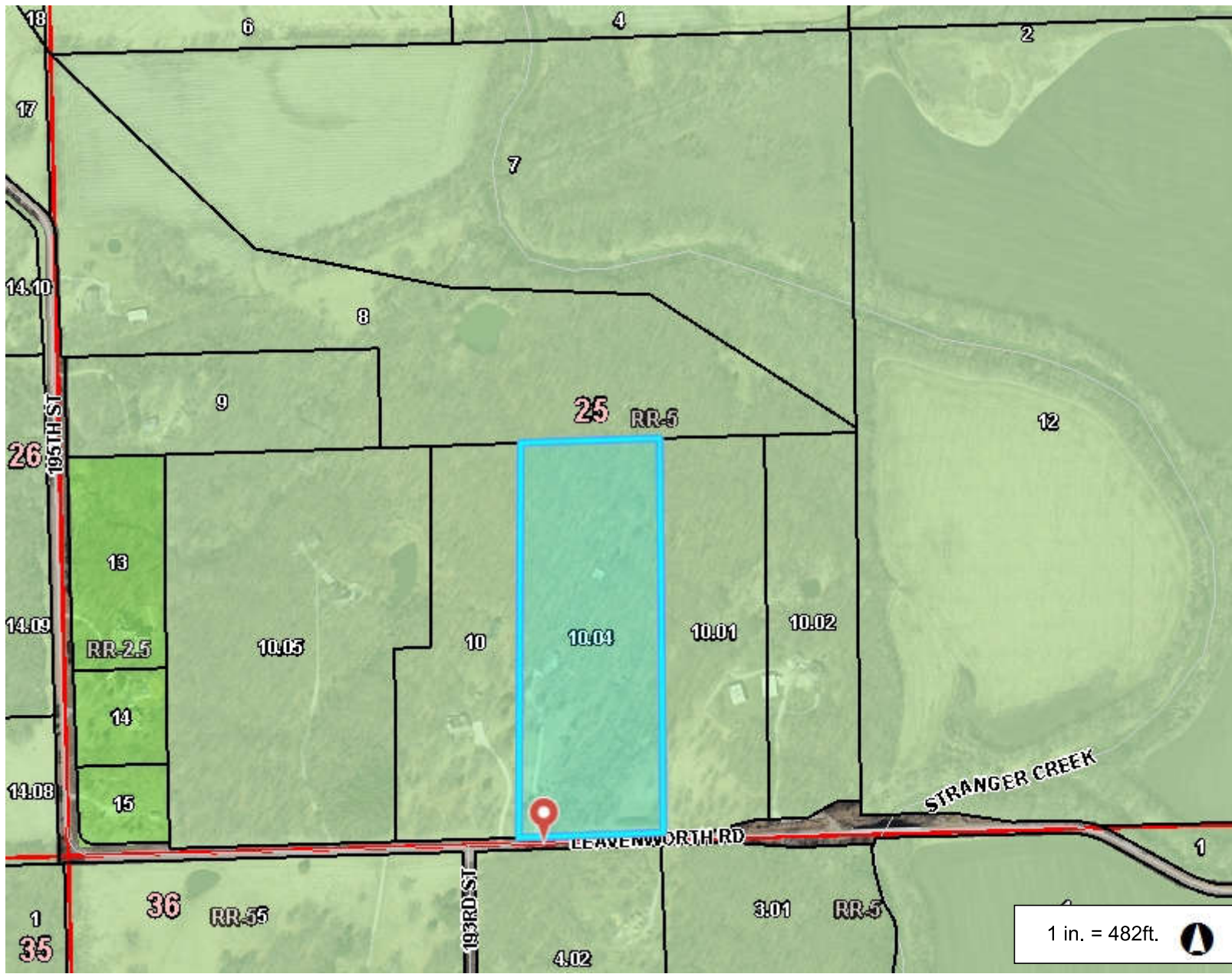


ATTACHMENTS:

A: Application & Narrative

B: Aerial Map
C: Zoning Map

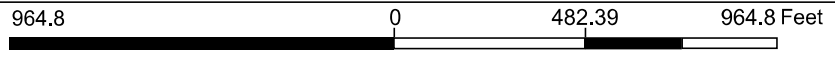
DEV-22-146 Cooper REzone



Legend

- Parcel Number
- Parcel
- City Limit Line
- Major Road
- <all other values>
- 70
- Road
- Railroad
- Section
- Section Boundaries
- County Boundary
- Zoning
- B-1
- B-2
- B-3
- I-1
- I-2
- I-3
- MXD
- PC
- PI
- PR-1
- PR-2
- PR-3
- PUD
- R-1

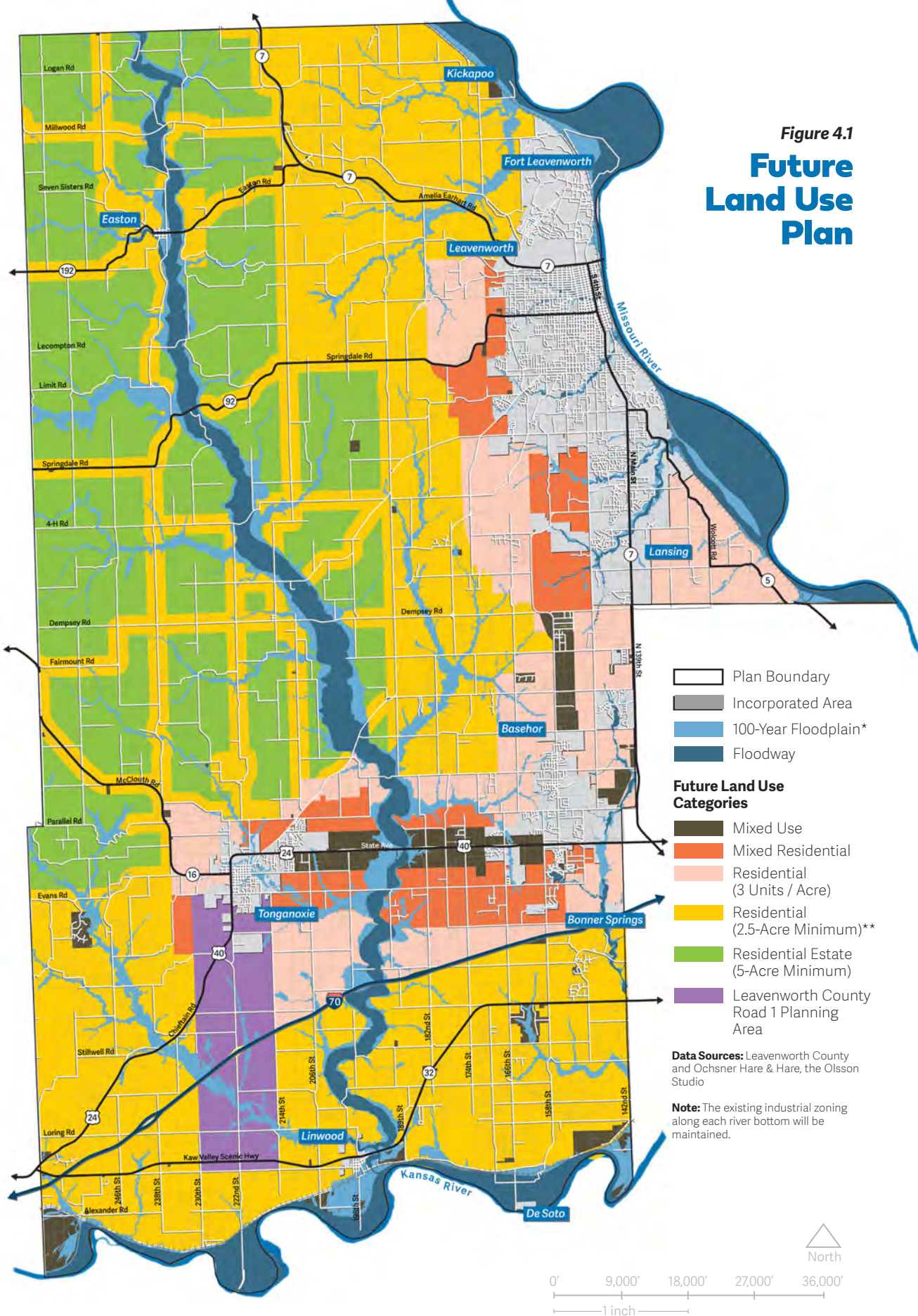
1 in. = 482ft.



This Cadastral Map is for informational purposes only. It does not purport to represent a property boundary survey of the parcels shown and shall not be used for conveyances or the establishment of property boundaries.
THIS MAP IS NOT TO BE USED FOR NAVIGATION

Notes

Figure 4.1
Future Land Use Plan



* Also known as Zone A or Zone AE, which are FEMA-defined Special Flood Hazard Areas

** Residential (2.5-Acre Minimum) is the designated future land use within a quarter-mile of each side of the centerline of all improved roads within Leavenworth County, unless the quarter-mile area on either side of the centerline of an improved road is designated as a denser future land use, such as Residential (3 Units / Acre), Mixed Residential, or Mixed Use. "Improved" roads refer to all paved roads within Leavenworth County, not including those roads that have been hard-surfaced through the dust-abatement process. Due to sporadic data inaccuracy, Figure 4.1 Future Land Use Plan may show this quarter-mile Residential (2.5-Acre Minimum) buffer along roads that are not improved. In such cases, the Residential (2.5-Acre Minimum) quarter-mile buffer does not apply to either side of the unimproved road's centerline.

REZONING APPLICATION

Leavenworth County Planning Department
300 Walnut, St., Suite 212
County Courthouse
Leavenworth, Kansas 66048
913-684-0465

Office Use Only

Township: _____ Date Received: _____
Planning Commission Date _____
Case No. _____ Date Paid _____
Zoning District _____ Comprehensive Plan Land Use Designation _____

APPLICANT/AGENT INFORMATION

OWNER INFORMATION (If different)

NAME Joe Herring NAME Charles E. Cooper
ADDRESS 315 North 5th Street ADDRESS 19266 Leavenworth Road
CITY/ST/ZIP Leavenworth, KS 66048 CITY/ST/ZIP Leavenworth, KS 66048
PHONE 913-651-3858 PHONE N/A
EMAIL herringsurveying@outlook.com EMAIL N/A
CONTACT PERSON Joe CONTACT PERSON N/A

PROPOSED USE INFORMATION

Proposed Land Use Rural Residential
Current Zoning RR-5 Requested Zoning RR 2.5
Reason for Requesting Rezoning Reduce zoning size to better match the comp plan - split off a 2.5 acre tract for family

PROPERTY INFORMATION

Address of Property 19266 Leavenworth Road
Parcel Size 14 Acres
Current use of the property Rural Residential
Present Improvements or structures House and Accessory Building
PID 147-25-0-00-00-010.04

I, the undersigned am the (*owner*), (*duly authorized agent*), (*Circle One*) of the aforementioned property situated in the unincorporated portion of Leavenworth County, Kansas. By execution of my signature, I do hereby officially apply for rezoning as indicated above.

Signature Joe Herring - digitally signed 10/18/2022 Date 10-18-22

ATTACHMENT A

RESOLUTION 2023-1

A resolution of the Leavenworth County Kansas Board of Commissioners, authorizing a rezoning from Rural Residential 5 to Rural Residential 2.5 on the following described property:

A tract of land in the South 1/2 of the Southwest 1/4 of Section 25, Township 10 South, Range 21 East of the 6th P.M., described as follows: Commencing at the Southwest corner of the Southwest 1/4 of Section 25, Township 10, Range 21; thence, North 89 degrees 57' 24" East, 1,496.30 feet along the Section line to the Point of Beginning of this tract; thence, North 00 degrees East, 1,319.56 feet; thence, North 89 degrees 57' 36" East, 462.00 feet along the North line of the South 1/2 of the Southwest 1/4 of Section 25; thence, South 00 degrees West, 1,319.53 feet; thence; south 89 degrees 57' 24" West, 462.00 feet to the point of beginning of this tract, less any part thereof taken or used for road purposes, in Leavenworth County, Kansas more commonly known as 19266 Leavenworth Road.

WHEREAS, it is hereby found and determined that a request for a Rezoning as described above was filed with the Secretary of the Leavenworth County Planning Commission, on the 10th day of October, 2022, and

WHEREAS, it is hereby found that the Leavenworth County Planning Commission, after notice as required by law, did conduct a public hearing upon the granting of such request for a Rezoning on the 12th day of December, 2022; and

WHEREAS, it is hereby found that the Leavenworth County Planning Commission, based upon specific findings of fact incorporated by reference herein, did recommend that the Rezoning be approved; and

WHEREAS, the Board of County Commissioners considered, in session on the 4th day of January, 2023, the recommendation of the Leavenworth County Planning Commission.

NOW, THEREFORE, BE IT RESOLVED by the Board of County Commissioners of Leavenworth County, Kansas, that:

1. Based upon the recommendation and findings of fact of the Leavenworth County Planning Commission; and,
2. Based upon the findings of fact adopted by the Board of County Commissioners in regular session on the 4th day of January, 2023, and incorporated herein by reference;

That request for rezoning as described above, also known as 19266 Leavenworth Road, Parcel Identification Number 146-23-0-00-00-009.00, is hereby granted.

Adopted this 4th day of January, 2023
Board of County Commission
Leavenworth, County, Kansas

Mike Smith, Chairman

ATTEST

Jeff Culbertson, Member

Janet Klasinski

Vicky Kaaz, Member

Doug Smith, Member

Mike Stieben, Member

**Leavenworth County
Request for Board Action
Resolution 2023-02
Rezoning from RR-5 to RR-2.5**

Date: January 4, 2023
To: Board of County Commissioners
From: Planning & Zoning Staff

Department Head Review: Krystal Voth, Reviewed

Additional Reviews as needed:

Budget Review Administrator Review Legal Review

Action Requested: Approve Resolution 2023-02, a request to rezone 20682 & 00000 195th Street from RR-5 to RR-2.5.

Analysis: The applicants are requesting a rezoning from Rural-Residential 5 to Rural-Residential 2.5. The Comprehensive Plan identifies the future land use of this area as Residential (2.5-Acre Minimum). The applicant is pursuing the rezone to prepare for a potential division of land in the future. Staff recommends approval as the Comprehensive Plan supports the rezoning.

Planning Commission Recommendation: The Planning Commission voted 7-0 (2 absent) to recommend approval of Case No. DEV-22-157 (Resolution 2023-02) Rezoning Request from RR-5 to RR-2.5.

Alternatives:

1. Approve Resolution 2023-02, Rezoning Request from RR-5 to RR-2.5, with Findings of Fact, and with or without conditions; or
2. Deny Resolution 2023-02, Rezoning Request from RR-5 to RR-2.5, with Findings of Fact; or
3. Revise or Modify the Planning Commission Recommendation to Resolution 2023-02, Rezoning Request from RR-5 to RR-2.5, with Findings of Fact; or
4. Remand the case back to the Planning Commission.

Budgetary Impact:

- Not Applicable
- Budgeted item with available funds
- Non-Budgeted item with available funds through prioritization
- Non-Budgeted item with additional funds requested

Total Amount Requested:
\$0.00

Additional Attachments: Staff Report, Planning Commission Minutes

**LEAVENWORTH COUNTY
BOARD OF COUNTY COMMISSIONERS
STAFF REPORT**

CASE NO: DEV-22-157 Fox Rezone

January 4, 2022

REQUEST: *Public Hearing Required*

- ZONING AMENDMENT SPECIAL USE PERMIT
 TEMPORARY SPECIAL USE PERMIT

STAFF REPRESENTATIVE:

JOSHUA GENTZLER
PLANNER II

SUBJECT PROPERTY: 00000 WOODEND ROAD

APPLICANT/APPLICANT AGENT:

JOE HERRING
HERRING SURVEYING COMPANY
315 N. 5TH STREET
LEAVENWORTH, KS 66048

PROPERTY OWNER:

FOX, ROBERT E; TRUST
9505 FALCON RIDGE DR
LENEXA, KS 66220

CONCURRENT APPLICATIONS:

N/A

LAND USE

ZONING: RR-5

FUTURE LAND USE DESIGNATION:
RESIDENTIAL (2.5-ACRE MIN)

LEGAL DESCRIPTION:

The Southeast ¼ of the Southeast ¼ of the Southeast Quarter of Section 26, Township 11 South, Range 21 East AND The East ½ of the Northwest Quarter, AND the Northeast Quarter of Section 35, Township 11 South, Range 21 East of the 6th P.M., Leavenworth County, Kansas.

SUBDIVISION: N/A

FLOODPLAIN: N/A

PLANNING COMMISSION RECOMMENDATION: APPROVAL

PROPERTY INFORMATION

ACTION OPTIONS:

1. Approve Resolution 2022-02, Rezoning Request from RR-5 to RR-2.5, with Findings of Fact, and with or without conditions; or
2. Deny Resolution 2023-02, Rezoning Request from RR-5 to RR-2.5, with Findings of Fact; or
3. Revise or Modify the Planning Commission Recommendation to Resolution 2023-02, Rezoning Request from RR-5 to RR-2.5, with Findings of Fact; or
4. Remand the case back to the Planning Commission

PARCEL SIZE: 250 ACRES

PARCEL ID NO:

197-35-0-00-00-001.02,
197-26-0-00-00-017.00 &
197-26-0-00-00-018.00

BUILDINGS:

NONE

PROJECT SUMMARY:

Request to rezone three tracts at 00000 Woodend Road (PID: 197-35-0-00-00-001.02, 197-26-0-00-00-017.00 & 197-26-0-00-00-018.00).

ACCESS/STREET:

WOODEND ROAD & 198TH ST
LOCAL, GRAVEL, ±18' WIDE

LOCATION MAP:



UTILITIES

SEWER: SEPTIC

FIRE: SHERMAN

WATER: NONE

ELECTRIC: EVERGY

NOTICE & REVIEW:

STAFF REVIEW: N/A

NEWSPAPER NOTIFICATION:
11/23/2022

NOTICE TO SURROUNDING
PROPERTY OWNERS:
11/22/2022

FACTORS TO BE CONSIDERED:		
<i>The following factors are to be considered by the Planning Commission and the Board of County Commissioners when approving or disapproving this Rezone request:</i>	Met	Not Met
<p>1. Character of the Neighborhood: <i>Density:</i> The parcels within the notification area range in size from 0 acres (375 square feet) acres to more than 235 acres in size. The area is not densely populated with an estimated 14 homes in the surrounding 1121 acres for a density of .0125 units per acre. The potential density of a future subdivision would be in-line with the density of parcels to the Southwest of the property between this property and 206th Street as the parcels there average 2.7 acres per parcel.</p> <p><i>Nearby City Limits:</i> There are no nearby cities.</p> <p><i>Initial Growth Management Area:</i> This parcel is not located within a Rural Growth Area.</p>	✓	✓
<p>2. Zoning and uses of nearby property: <i>Adjacent Uses:</i> Most of the adjacent parcels are residential and agricultural in nature.</p> <p><i>Adjacent Zoning:</i> All adjacent properties are zoned RR-5.</p>		✓
<p>3. Suitability of the Property for the uses to which is has been restricted: The property is suitable for rural residences and agricultural uses.</p>	✓	
<p>4. Extent to which removal of the restrictions will detrimentally affect nearby property: <i>Nearby properties are unlikely to be negatively impacted as the proposed rezoning remains rural residential.</i></p>	✓	
<p>5. Length of time the property has been vacant as zoned: <i>Vacant:</i> <input checked="" type="checkbox"/> <i>Not Vacant:</i></p>	✓	
<p>6. Relative gain to economic development, public health, safety and welfare: The rezoning does not negatively impact economic development, public health, safety or welfare. In the event the parcel were to be developed as a rural subdivision, twice as many homes could potentially be constructed which may have a positive impact on economic development.</p>	✓	
<p>7. Conformance to the Comprehensive Plan: <i>Future Land Use Map:</i> Residential (2.5-acres Minimum) <i>Section 4 Land Use and Development Plan Strategies:</i> The proposed use is compatible with the future land use designation.</p>	✓	

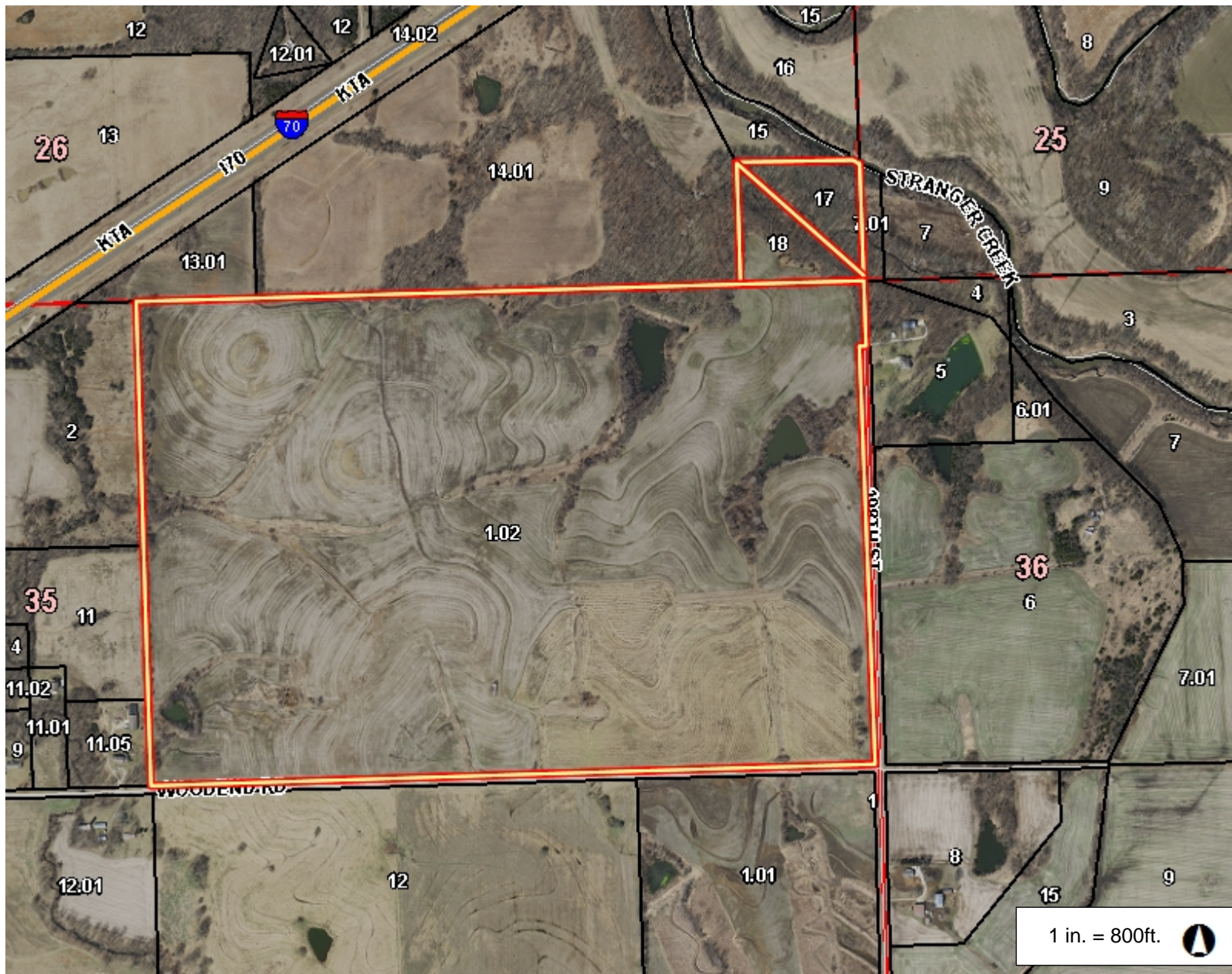
STAFF COMMENTS:

The applicants are requesting a rezoning from Rural-Residential 5 to Rural-Residential 2.5. The Comprehensive Plan identifies the future land use of this area as *Residential (2.5-Acre Minimum)*. The applicant is pursuing the rezone to prepare for a potential division of land in the future. Staff recommends approval as the Comprehensive Plan supports the rezoning.

ATTACHMENTS:

- A: Application & Narrative
- B: Zoning Map
- C: Approval

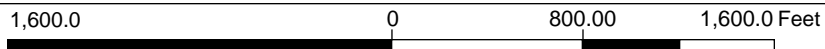
DEV-22-157 RZ Fox



Legend

- Parcel Number
- Parcel
- City Limit Line
- Major Road
 - <all other values>
 - 70
- Road
- Railroad
- Section
- Section Boundaries
- County Boundary

1 in. = 800ft.

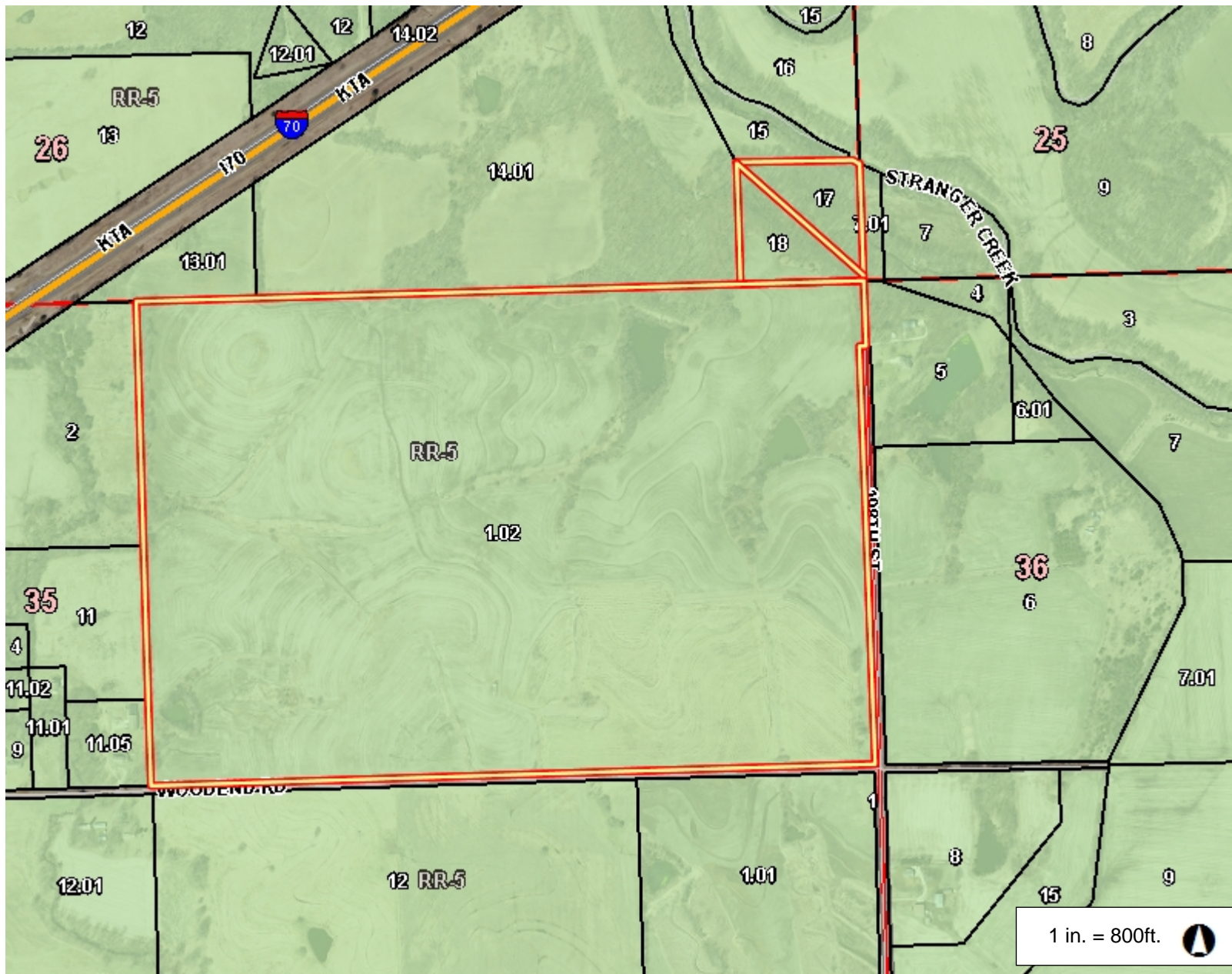


This Cadastral Map is for informational purposes only. It does not purport to represent a property boundary survey of the parcels shown and shall not be used for conveyances or the establishment of property boundaries.

THIS MAP IS NOT TO BE USED FOR NAVIGATION

Notes

DEV-22-157 RZ Fox



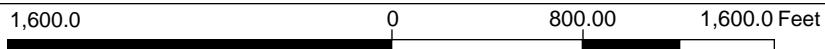
Legend

- Parcel Number
- Parcel
- City Limit Line
- Major Road
 - <all other values>
 - 70
- Road
- Railroad
- Section
- Section Boundaries
- County Boundary
- Zoning
 - B-1
 - B-2
 - B-3
 - I-1
 - I-2
 - I-3
 - MXD
 - PC
 - PI
 - PR-1
 - PR-2
 - PR-3
 - PUD
 - R-1

Notes

This Cadastral Map is for informational purposes only. It does not purport to represent a property boundary survey of the parcels shown and shall not be used for conveyances or the establishment of property boundaries.

THIS MAP IS NOT TO BE USED FOR NAVIGATION



1 in. = 800ft.

REZONING APPLICATION

Leavenworth County Planning Department
300 Walnut, St., Suite 212
County Courthouse
Leavenworth, Kansas 66048
913-684-0465

Office Use Only

Township: _____ Date Received: _____
Planning Commission Date _____
Case No. _____ Date Paid _____
Zoning District _____ Comprehensive Plan Land Use Designation _____

APPLICANT/AGENT INFORMATION

OWNER INFORMATION (If different)

NAME Joe Herring NAME FOX, ROBERT E; TRUST
ADDRESS 315 North 5th Street ADDRESS 9505 FALCON RIDGE DR
CITY/ST/ZIP Leavenworth, KS 66048 CITY/ST/ZIP LENEXA, KS 66220
PHONE 913-651-3858 PHONE N/A
EMAIL herringsurveying@outlook.com EMAIL N/A
CONTACT PERSON Joe CONTACT PERSON N/A

PROPOSED USE INFORMATION

Proposed Land Use AG & RURAL RESIDENTIAL
Current Zoning RR-5 Requested Zoning RR- 2.5
Reason for Requesting Rezoning Estate planning

PROPERTY INFORMATION

Address of Property 00000 Woodend Road
Parcel Size 250 Acres
Current use of the property Agriculture
Present Improvements or structures Ag Structure
PID 197-35-0-00-00-001.02, 197-26-0-00-00-017 & 197-26-0-00-00-018

I, the undersigned am the (*owner*), (*duly authorized agent*), (*Circle One*) of the aforementioned property situated in the unincorporated portion of Leavenworth County, Kansas. By execution of my signature, I do hereby officially apply for rezoning as indicated above.

Signature Joe Herring - digitally signed 11-7-2022 Date 11/7/22

ATTACHMENT A

From: [Anderson, Kyle](#)
Sent: Monday, November 14, 2022 12:07 PM
To: [Gentzler, Joshua](#)
Subject: RE: Review - Rezoning for Fox property - DEV-22-157

We have not received any complaints on this property, and we do not know of any septic systems installed.

Kyle Anderson
Environmental Technician/Code Enforcement
Leavenworth County Planning & Zoning
300 Walnut St. Ste. 212
Leavenworth, KS 66048
913-684-1084

From: Gentzler, Joshua <JGentzler@leavenworthcounty.gov>
Sent: Wednesday, November 9, 2022 4:14 PM
To: Anderson, Kyle <KAnderson@leavenworthcounty.gov>; Magaha, Chuck <cmagaha@lvsheriff.org>; Miller, Jamie <JMiller@leavenworthcounty.gov>; Noll, Bill <BNoll@leavenworthcounty.gov>; Thorne, Eric <ethorne@lvsheriff.org>; Van Parys, David <DVanParys@leavenworthcounty.gov>; stfrchief@yahoo.com; 'designgroupshawnee@evergy.com' <designgroupshawnee@evergy.com>
Subject: Review - Rezoning for Fox property - DEV-22-157

Good afternoon,

The Department of Planning and Zoning has received an application for a Rezoning regarding a property at located at the northwest corner of 198th Street & Woodend Road, Linwood, KS 66052 (PID: 197-35-0-00-00-001.02).

The Planning Staff would appreciate your written input in consideration of the above request. Please review the attached information and forward any comments to us by Wednesday, Nov 16th.

If you have any questions or need additional information, please contact me at (913) 684-0464 or at JGentzler@LeavenworthCounty.Gov.

Thank you,

Joshua Gentzler
Planner II
[Planning & Zoning](#)
Leavenworth County
913.684.0465

RESOLUTION 2023-02

A resolution of the Leavenworth County Kansas Board of Commissioners, authorizing a rezoning from Rural Residential-5 to Rural Residential-2.5 on the following described property:

The Southeast ¼ of the Southeast ¼ of the Southeast Quarter of Section 26, Township 11 South, Range 21 East AND The East ½ of the Northwest Quarter, AND the Northeast Quarter of Section 35, Township 11 South, Range 21 East of the 6th P.M., Leavenworth County, Kansas.

WHEREAS, it is hereby found and determined that a request for a Rezoning as described above was filed with the Secretary of the Leavenworth County Planning Commission, on the 9th day of November, 2022, and

WHEREAS, it is hereby found that the Leavenworth County Planning Commission, after notice as required by law, did conduct a public hearing upon the granting of such request for a Rezoning on the 14th day of December, 2022; and

WHEREAS, it is hereby found that the Leavenworth County Planning Commission, based upon specific findings of fact incorporated by reference herein, did recommend that the Rezoning be approved; and

WHEREAS, the Board of County Commissioners considered, in session on the 4th day of January, 2023, the recommendation of the Leavenworth County Planning Commission.

NOW, THEREFORE, BE IT RESOLVED by the Board of County Commissioners of Leavenworth County, Kansas, that:

1. Based upon the recommendation and findings of fact of the Leavenworth County Planning Commission; and,
2. Based upon the findings of fact adopted by the Board of County Commissioners in regular session on the 4th day of January, 2024, and incorporated herein by reference;

That request for rezoning as described above, also known as 00000 Woodend Road, Parcel Identification Number 197-35-0-00-00-001.02, is hereby granted.

Adopted this 4th day of January, 2023
Board of County Commission
Leavenworth, County, Kansas

Mike Smith, Chairman

ATTEST

Jeff Culbertson, Member

Janet Klasinski

Vicky Kaaz, Member

Doug Smith, Member

Mike Stieben, Member

**WORK SESSION
MATERIAL ONLY**

SUBJECT	ISSUED BY	EFFECTIVE DATE	REVISION
<p>Planning & Zoning Policy on Subdivision Roadway Inspection Services</p>	<p>Board of County Commissioners</p>	<p>12-07-2022</p>	<p>1.0</p>

A. PURPOSE:

Define the inspection and testing requirements for privately developed subdivision roadways that will be accepted into the county road system after their completion.

B. POLICY:

Required construction engineering services for roadways that are designed in accordance with the Leavenworth County Road Construction and Storm Water Design Standards and are intended to be accepted by the County into the County maintained roadway system, after construction, as part of a subdivision development are the responsibility of the developer. The developer shall select a County and KDOT preapproved construction engineering consultant from a list provided by the County before the required pre-construction meeting. The pre-construction meeting must include the developer, the construction engineering firm, the construction contractor, and the County. The developer shall notify the County of the construction engineering firm selected and provide a primary contact prior to the pre-construction meeting. It shall be the responsibility of the developer to coordinate all required roadway inspections with the construction engineering firm they select. The construction engineer shall provide all inspection services. This shall include a qualified resident inspector during asphalt paving and other qualified staff necessary to assist the construction engineer in observing and testing the performance of the work of the contractor as required. The resident inspector is the construction engineer’s agent at the site during paving and will act as directed by, and under, the supervision of the construction engineer project manager. If, at any time, the construction engineering project manager or their staff find any testing results or material does not meet the required standards, the County, developer, and contractor shall be immediately notified. Upon notification, the contractor shall cease work until the contractor provides the County a corrective plan and the County accepts said plan.

C. CONSTRUCTION ENGINEERING DUTIES AND RESPONSIBILITIES

1. Pre-Construction: Provide the County with the construction schedule. The construction engineering project manager shall email the County any significant schedule changes. If the schedule is more than two weeks behind or ahead, a new schedule must be provided. The project manager shall also notify the county via email when the earthwork base compaction is completed prior to the AB3 material

- placement, the date and time of the proofroll, and the date and time of the asphalt paving.
2. During Construction: Shop drawing submittals, construction/progress schedules, and compile testing log for submittal to the County.
 3. Conferences and meetings: Attend meetings with the contractor, such as preconstruction conferences, progress meetings, final punch list walk-through, and any other project related meetings.
 4. Coordination: Serve as construction engineer's coordinator with the contractor and developer. Coordinating with the design engineer and contractor to assist in understanding the intent of the project plans and specifications. Assist in obtaining additional details or information from the county or design engineer of record required for the proper execution of the work. The County shall be notified and must approve in writing any deviations and/or substitutions from the design plans prior to construction commencing.
 5. Inspection of Work:
 - a. Conduct on-site observation and testing of the work in progress in accordance with the Road Construction and Storm Water Drainage Standards current edition. The County shall provide the developer, contractor, and construction engineer the current edition of the Sampling and Testing Frequency Chart for roadway acceptance prior to or at the pre-construction meeting.
 - b. Documented inspections shall occur bi-weekly at a minimum for any site that has a SWPPP:
 - i. SWPPP inspector shall take photos of any deficiencies found and notify the contractor.
 - c. Resident inspection during any paving operations, tie into to existing pavement, and concrete placement (curb/gutter and sidewalk placement).
 - d. Inspection of vegetation within public right-of-way per SWPPP permit requirements. When the construction engineer has determined the public right-of-way to be 70% vegetated throughout the entirety of the whole right of way, the construction engineer will schedule an onsite meeting with the County Public Works Department to review the vegetation establishment. Vegetation will not be accepted if 70% of the right-of-way is 100% vegetated and 30% of the right-of-way is 0% vegetated. The entire site must be 70% vegetated.
 6. Materials Inspections: Construction engineer shall determine all inspection locations prior to construction, review all materials testing results and reports to verify compliance with contract documents. Testing requirements are shown in the Sampling and Testing Frequency Chart provided by the County.
 7. As-Built review: Verification of As-Built plans to site inspections and contract documents.
 - a. As-Built to include:

- i. Survey of stormwater drainage swales outside of the right-of-way consisting of location and elevation at the start and end and every 50 feet in between. A minimum of 3 locations per swale.
 - ii. Survey of the roadway including stormwater systems.
8. Final Inspection Report: Final inspection report will include the following:
 - a. An acceptance letter from the designated construction engineering firm. Said letter must be signed and sealed by a licensed engineer in the State of Kansas stating the project was constructed in conformance with contract documents, project specifications, site inspections, and testing.
 - b. All inspection and testing reports with photo logs.
 - c. All material testing inspection reports shall include testing locations.
 - d. As-builts.

*Prior to placement of aggregate base, the roadway subgrade should be proofrolled. Pumping, rolling and/or rutting of over one-half an inch will be deemed unsuitable. Unsuitable areas observed at this time should be improved by compaction or by undercutting and placement of suitable compacted fill. Proofrolling may be accomplished with a fully loaded, tandem axle dump truck or other equipment providing an equivalent subgrade loading. A gross weight ranging between 20 to 25 tons is required for the proofrolling equipment.

D. PUBLIC ROADWAY ACCEPTANCE:

Final inspection report shall be provided to the Leavenworth County Public Works Department upon completion. Upon review and acceptance of the report, the County will accept said roadway into the County inventory. After acceptance, the County will assume responsibility for the maintenance of the roadway. Building permits will not be issued prior to the acceptance of the roadway. All fees associated with the construction engineering and inspections shall be the responsibility of the developer.

E. CONSTRUCTION ENGINEERING LIMITATIONS OF AUTHORITY:

1. The construction engineering firm shall not authorize any deviation from the accepted design plans, the Leavenworth County Road Construction and Storm Water Drainage Standards, or the Sampling and Testing Frequency Chart provided as a guide. This includes any and all construction industry standard means and methods to be completed by the contractor to construct the roadway, unless authorized by the design engineer of record and approved by the County in writing or the contractor desires to accept full responsibility for any deficiencies their deviation from standard practice creates.

BOCC Chairman – Michael Smith

12-07-2022
Date of Adoption

SUBJECT	ISSUED BY	EFFECTIVE DATE	REVISION
Planning & Zoning Policy on Subdivision Roadway Inspection Services	Board of County Commissioners	12-07-2022	1.0

A. PURPOSE:

Define the inspection and testing requirements for privately developed subdivision roadways that will be accepted into the county road system after their completion.

B. POLICY:

Required construction engineering services for roadways that are designed in accordance with the Leavenworth County Road Construction and Storm Water Design Standards and are intended to be accepted by the County into the County maintained roadway system, after construction, as part of a subdivision development are the responsibility of the developer. The developer shall select a County and KDOT preapproved construction engineering consultant from a list provided by the County before the required pre-construction meeting. The pre-construction meeting must include the developer, the construction engineering firm, the construction contractor, and the County. The developer shall notify the County of the construction engineering firm selected and provide a primary contact prior to the pre-construction meeting. It shall be the responsibility of the developer to coordinate all required roadway inspections with the construction engineering firm they select. The construction engineer shall provide all inspection services. This shall include a qualified resident inspector during asphalt paving and other qualified staff necessary to assist the construction engineer in observing and testing the performance of the work of the contractor as required. The resident inspector is the construction engineer’s agent at the site during paving and will act as directed by, and under, the supervision of the construction engineer project manager. If, at any time, the construction engineering project manager or their staff find any testing results or material does not meet the required standards, the County, developer, and contractor shall be immediately notified. Upon notification, the contractor shall cease work until the contractor provides the County a corrective plan and the County accepts said plan.

C. CONSTRUCTION ENGINEERING DUTIES AND RESPONSIBILITIES

1. Pre-Construction: Provide the County with the construction schedule. The construction engineering project manager shall email the County any significant schedule changes. If the schedule is more than two weeks behind or ahead, a new schedule must be provided. The project manager shall also notify the county via email when the earthwork base compaction is completed prior to the AB3 material

- placement, the date and time of the proofroll, and the date and time of the asphalt paving.
2. During Construction: Shop drawing submittals, construction/progress schedules, and compile testing log for submittal to the County.
 3. Conferences and meetings: Attend meetings with the contractor, such as preconstruction conferences, progress meetings, final punch list walk-through, and any other project related meetings.
 4. Coordination: Serve as construction engineer's coordinator with the contractor and developer. Coordinating with the design engineer and contractor to assist in understanding the intent of the project plans and specifications. Assist in obtaining additional details or information from the county or design engineer of record required for the proper execution of the work. The County shall be notified and must approve in writing any deviations and/or substitutions from the design plans prior to construction commencing.
 5. Inspection of Work:
 - a. Bi-weekly project on-site inspections. RPR to take photos of the site. – I left Bi-weekly project SWPPP inspections in the policy but opened it to be completed by the contractor. I removed the requirement to provide photos to the county at the time of each inspection. I have concerns that by requiring inspections but having no control over the ability to require corrective action, we could incur some liability if a neighboring property is damaged by runoff or silt. The SWPPP permit is not transferred or issued to the county and encompasses areas outside of the right-of-way. We have not addressed the SWPPP at all in the past except to keep a copy of the permit and the erosion plans. It has always been the full responsibility of the developer/contractor. We do this on all county road project but the county holds the permits and contract for construction.
 - b. Inspection of materials delivered to the site to verify compliance with the contract documents and approved submittals. – I removed this. This primarily includes all culvert materials and AB3 for base (AB3 delivery may happen over several days). This was not discussed or directed by the BoCC to date. We do this on all county road projects.
 - c. Inspect all utilities placed in public right-of-way. I removed this. We have not inspected any utility installations in the past. Olsson staff had concerns regarding roadway crossings of water, fiber, and phone and, like we have seen before, washing out of the trench where the waterline was laid in the bottom of a drainage ditch. In the past we just didn't except the right-of-way until the ditches are fixed and vegetated. We would do this on county road projects.
 - d. Proofroll (*) inspection on subgrade prior to placement of aggregate base. – I left this in. It was being completed prior by scheduling the county staff to come

- to the site. It would now viewed and documented by the inspector and we would continue to attend if available.
- e. Proofroll (*) inspection on aggregate base prior to placement of pavement section. – I took this out as it was outside of the scope of what was approved by the board to date and it was also not specifically discussed. It was not completed in the past and nuclear density testing is already required for the aggregate section. Olsson had concerns that spot testing could pass and failing areas would not be caught unless a proofroll of the entire roadway was completed. The county would complete this on any roadway that we are building but we would have a resident inspector on site already.
 - f. Full-time inspection during any backfilling of stormwater systems in right-of-way, paving operations, tie to existing pavement, and concrete placement (curb/gutter and sidewalk placement). – Paving, tie in, and concrete curb construction phases had resident inspection remain in the draft. Backfilling of stormwater systems was removed. Nuclear density testing of the backfill over storm structures is required after the fill is completed already. The county would do this on all county road projects.
 - g. Inspection of vegetation within public right-of-way per contract documents. When RPR has determined the public right-of-way vegetated, the RPR will schedule an onsite meeting with the County Public Works Department to verify the vegetation establishment. – I changed this language. We do not have a contract with the developer and I added a more defined narrative to illustrate what is considered vegetated.
6. Materials Inspections: Construction engineer shall determine all inspection locations prior to construction, review all materials testing results and reports to verify compliance with contract documents. Testing requirements are shown in the Sampling and Testing Frequency Chart provided by the County.
 7. As-Built review: Verification of As-Built plans to site inspections and contract documents.
 - a. As-Built to include:
 - i. Survey of stormwater drainage swales outside of the right-of-way consisting of location and elevation at the start and end and every 50 feet in between. A minimum of 3 locations per swale.
 - ii. Survey of the roadway including stormwater systems.
 8. Final Inspection Report: Final inspection report will include the following:
 - a. An acceptance letter from the designated construction engineering firm. Said letter must be signed and sealed by a licensed engineer in the State of Kansas stating the project was constructed in conformance with contract documents, project specifications, site inspections, and testing.
 - b. All inspection and testing reports with photo logs.
 - c. All material testing inspection reports shall include testing locations.

d. As-builts.

*Prior to placement of aggregate base, the roadway subgrade should be proofrolled. Pumping, rolling and/or rutting of over one-half an inch will be deemed unsuitable. Unsuitable areas observed at this time should be improved by compaction or by undercutting and placement of suitable compacted fill. Proofrolling may be accomplished with a fully loaded, tandem axle dump truck or other equipment providing an equivalent subgrade loading. A gross weight ranging between 20 to 25 tons is required for the proofrolling equipment.

D. PUBLIC ROADWAY ACCEPTANCE:

Final inspection report shall be provided to the Leavenworth County Public Works Department upon completion. Upon review and acceptance of the report, the County will accept said roadway into the County inventory. After acceptance, the County will assume responsibility for the maintenance of the roadway. Building permits will not be issued prior to the acceptance of the roadway. All fees associated with the construction engineering and inspections shall be the responsibility of the developer.

E. CONSTRUCTION ENGINEERING LIMITATIONS OF AUTHORITY:

The construction engineering firm shall not authorize any deviation from the accepted design plans, the Leavenworth County Road Construction and Storm Water Drainage Standards, or the Sampling and Testing Frequency Chart provided as a guide. This includes any and all construction industry standard means and methods to be completed by the contractor to construct the roadway, unless authorized by the design engineer of record and approved by the County in writing or the contractor desires to accept full responsibility for any deficiencies their deviation from standard practice creates.

SAMPLING AND TESTING FREQUENCY CHART

County of Leavenworth

CONSTRUCTION OR MATERIAL TYPE	TEST REQUIRED	TEST METHOD	Code	ACCEPTANCE SAMPLES AND TESTS
COMPACTION OF EARTHWORK				
General (AAA, AA, or A)	Moisture/Density Proctors	ASTM D698	L	Preconstruction and when source material changes.
	Field Density Tests	KT-13, KT-51	A	Every 1000 ft (300 m) with a minimum of 3 tests.
	Moisture Tests	KT-11, KT-51	A	Every 1000 ft (300 m) with a minimum of 3 tests.
Type B (MR-90)	Moisture Tests	KT-11		Moisture to meet project requirements as needed and visual inspection only.
Structure Backfill	Moisture/Density Proctors	ASTM D698	L	Preconstruction and when source material changes.
	Field Density Tests	KT-13, KT-51	A	1 per structure minimum per lift (each side)
	Moisture Tests	KT-11, KT-51	A	1 per structure minimum per lift (each side)
Utilites and Stormwater Backfill	Moisture/Density Proctors	ASTM D698	L	Preconstruction and when source material changes.
	Field Density Tests	KT-13, KT-51	A,L	Test every 8" lift under pavement areas. In green areas, every 500 ft with a minimum of 3 tests per every 2 feet of trench backfill.
	Moisture Tests	KT-11, KT-51	A,L	Test every 8" lift under pavement areas. In green areas, every 500 ft with a minimum of 3 tests per every 2 feet of trench backfill.

SAMPLING AND TESTING FREQUENCY CHART
County of Leavenworth

CONSTRUCTION OR MATERIAL TYPE	TEST REQUIRED	TEST METHOD	Code	ACCEPTANCE SAMPLES AND TESTS
AGGREGATE BASE COURSE				
Combined Aggregates	Moisture/Density Proctor	ASTM D698	A,B,L	Preconstruction and when source material changes.
	Soundness	KTMR-21	E,L	Preconstruction and when source material changes. Can forego if KDot approved supplier is used.
	Wear	AASHTO T96	E,L	Preconstruction and when source material changes. Can forego if KDot approved supplier is used.
	Sieve Analysis of Aggregate	KT-2	A,G	1000 ft (300 m) each lift. If total aggregate then each 500 TONS.
	Plasticity Tests	KT-10	B,C	1000 ft (300 m) each lift. If total aggregate then each 500 TONS.
	Moisture Tests	KT-11	E	
Completed Base	Field Density Tests	KT-13 or KT-41		Every 1000 ft (300 m) each lift with a minimum of 3 tests.
	Proofroll		L	Proofrolling may be accomplished with a fully

SAMPLING AND TESTING FREQUENCY CHART
County of Leavenworth

CONSTRUCTION OR MATERIAL TYPE	TEST REQUIRED	TEST METHOD	Code	ACCEPTANCE SAMPLES AND TESTS
PORTLAND CEMENT CONCRETE SIDEWALK AND FLATWORK				
	Slump	KT-21	H,L	As often as needed to control product. Min. of 1 set of test per half day and/or per 4000 square yards. Perform tests with every set of test cylinders.
	Unit Weight	KT-20		
	Air Content	KT-18, KT-19, or KT-20		
	Temperature	KT-11		
	Cylinders	KT-22	A,L	Minimum 1 set of 5 per 500 cubic yds. One cylinder at 7 days and three cylinders at 28 days. One cylinder shall be reserved for additional testing if required.
PORTLAND CEMENT CONCRETE CURB AND GUTTER				
	Slump	KT-21	H,L	As often as needed to control product. Min. of 1 set of test per half day. Perform tests with every set of test cylinders.
	Unit Weight	KT-20		
	Air Content	KT-18, KT-19, or KT-20		
	Temperature	KT-11		
	Cylinders	KT-22	A,L	Minimum 1 set of cylinders per half day. One cylinder at 7 days and three cylinders at 28 days. One cylinder shall be reserved for additional testing if required.

SAMPLING AND TESTING FREQUENCY CHART
County of Leavenworth

CONSTRUCTION OR MATERIAL TYPE	TEST REQUIRED	TEST METHOD	Code	ACCEPTANCE SAMPLES AND TESTS
HOT MIX ASPHALT (HMA)				
Bituminous Mixtures (field sampled)	Air Voids	KT-15, KT-39, KT-58, SF Manual	A,G,L	1 set of tests per day per lift. County Engineer or RPR to receive results in approximately 8 hours from field sampling.
	Binder Content	KT-57		
	Mix Gradation after Ignition	KT-34		
	Density	KT-14 or KT-58		
Completed Road Work	Field Density Tests	KT-32	A	Every 500 lf with a minimum of 3 tests.
	Field Density Cores	KT-15	E,L	Minimum of 3 locations per road if directed by County or RPR.
CONSTRUCTION OR MATERIAL TYPE	TEST REQUIRED	TEST METHOD	Code	ACCEPTANCE SAMPLES AND TESTS
STONE FOR RIPRAP, WASH CHECKS & OTHER MISC. USES				
	Sieve Analysis of Aggregate	KT-2	A,G	500 TONS or 500 cubic yards. Tests to be done at production site.
	Soundness	KTMR-21	E,L	Preconstruction and when source material changes. Can forego if KDot approved supplier is used.
	Wear	AASHTO T96	E,L	Preconstruction and when source material changes. Can forego if KDot approved supplier is used.

SAMPLING AND TESTING FREQUENCY CHART

County of Leavenworth

Code Instruction

- A Normal operation. The minimum frequency for exceptional conditions may be reduced by the County Engineer on a project basis, written justification shall be made to the County Engineer and placed in the project documents.
- B Applicable only when specifications contain those requirements.
- C If, for a given project, no Plastic Index results of ten (10) consecutive tests are closer than 1 Plastic Index to the specifications limit, the specified testing frequency may be reduced by fifty percent (50%). When operating at a reduced testing frequency, should any two (2) consecutive Plastic Index results exceed the test limit results required for reduced testing frequency, testing shall be resumed at the original specified frequency. The original specified testing frequency shall be resumed should any one test result exceed the specification limits. Following a return to the original specified testing frequency, the reduced frequency may be resumed providing the original criteria for reduced frequency are met.
- E Engineer's discretion. Frequency of tests shall be agreed upon by the Construction Engineer and the County. Frequency will be governed by field conditions. Written documentation of the agreed upon testing frequency shall be included in the project records.
- G For determining moisture content of a material, KT-43, Moisture Content of Asphalt Mixtures or Mineral Aggregates - Microwave Oven Method, can be used in conjunction with KT-2, KT-3, KT-4, KT-8, KT-12, KT-13, and KT-34.
- H Initial frequency. Frequency may be reduced on a project basis, by authority of the Project Engineer, upon continued satisfactory and uniform production. Authorization for reductions in testing frequency shall be documented in the project records.
- L Leavenworth County Specification.

GENERAL NOTES

Note 1: All sampling and testing frequencies listed are minimum. Additional or other tests will be conducted, as required, to control the work.

Note 2: Frequencies are based on two lane roadways. For four or more lane roadway construction, double the frequencies shown per unit length.

Note 3: All aggregate acceptance tests are to be conducted at the point of usage except for Item 15, Stone for Riprap, Wash Checks, and Other Miscellaneous Uses

Note 4: Tests shall be performed on a random basis unless specified otherwise.

Note 5: All test methods listed as "KT" are Kansas Test methods and may be found in the KDOT Construction Manual Part V.

Note 6: Testing not within table, see Appendix A KDOT standards and specifications latest edition.

Pre-Qualified Consultants

Name	Address	City	State	Zipcode	Phone
<u>BG Consultants, Inc.</u>	1405 Wakarusa Drive	Lawrence	KS	66049	785-749-4474
<u>Burns & McDonnell Engineering Company, Inc.</u>	9400 Ward Parkway	Kansas City	MO	64114-3319	816-333-9400
<u>Cook, Flatt & Strobel, Engineers, P.A.</u>	2930 SW Woodside Drive	Topeka	KS	66614	785-272-4706
<u>Finney & Turnipseed, Transp.&CE, LLC</u>	610 SW 10th Street, Suite 200	Topeka	KS	66612-1674	785-235-2394
<u>gba Systems Integrators, LLC</u>	9801 Renner Blvd. Suite 300	Lenexa	KS	66219	913-492-0400
<u>HNTB Corporation</u>	7400 W 129th St, Ste 100	Overland Park	KS	66213-3325	913-491-9333
<u>JEO Consulting Group, Inc.</u>	1937 North Chestnut St.	Wahoo	NE	68066	402-443-4661
<u>Kaw Valley Engineering, Inc.</u>	2319 N. Jackson, Box 1304	Junction City	KS	66441-1304	785-762-5040
<u>Mc Afee, Henderson Solutions</u>	15700 College Blvd. Suite 202	Lenexa	KS	66219	913-888-4647
<u>Olsson, Inc.</u>	7301 W. 133rd St, Suite 200	Overland Park	KS	66213	913-381-1170
<u>Professional Engineering Consultants, P.A.</u>	303 S. Topeka	Wichita	KS	67202	316-262-2691
<u>Terracon Consultants, Inc.</u>	3113 SW Van Buren St	Topeka	KS	66611	785-267-3310
<u>TranSystems Corporation</u>	2400 Pershing Rd, Ste 400	Kansas City	MO	64108-2526	816-329-8600
<u>Wilson & Company, Inc., Engineers & Architects*</u>	800 East 101st Terr., Suite 200	Kansas City	MO	64131	816-701-3100